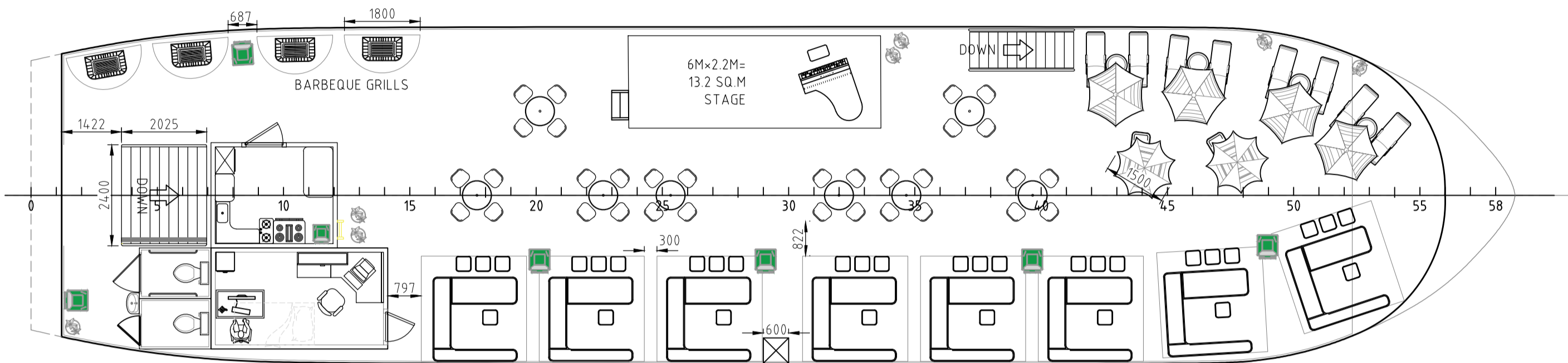
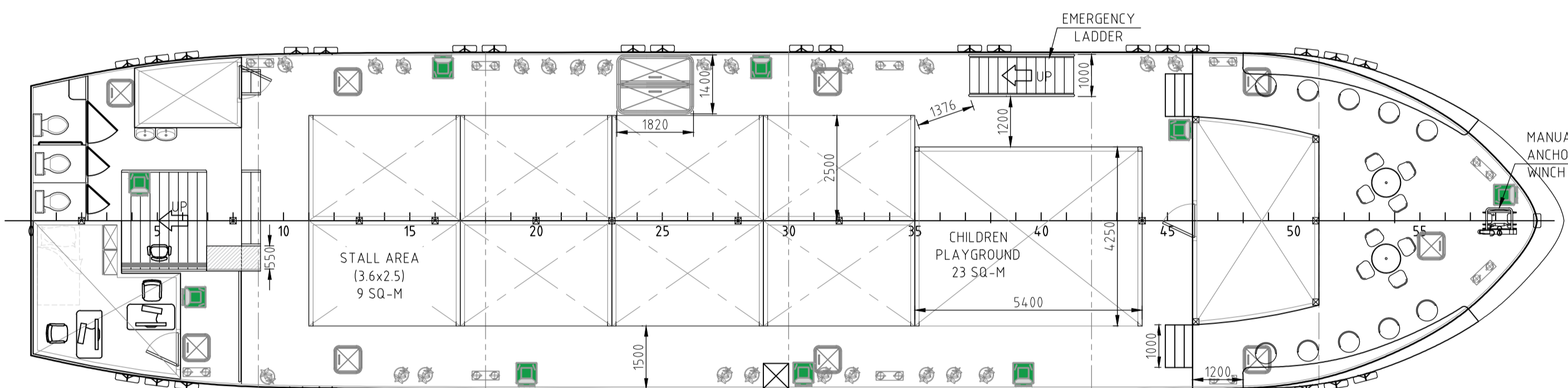


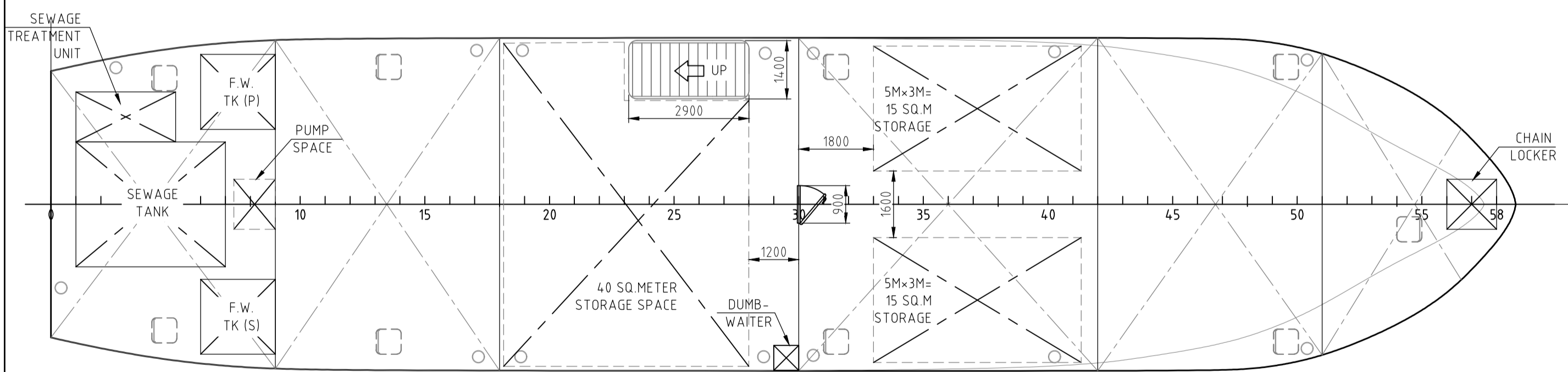
PROFILE
SCALE 1:100



UPPER DECK PLAN
SCALE 1:100



MAIN DECK PLAN
SCALE 1:100



BELOW DECK PLAN
SCALE 1:100

PRELIMINARY

NOTES:

- TOTAL STORAGE SPACE APPROXIMATELY 70 SQ.M.
- 225 MM RISE, 45° STEPS FOR MAIN STAIR, EMERGENCY STAIR & STORAGE SPACE STAIR.

<small>NO.10, BO TAY ZA STREET (2), TAN TU MA ROAD, TUWANNA TOWNSHIP, YANGON, MYANMAR PHONE : +95 95040848, +95 9459196096, +95 9773820727</small>			
GENERAL ARRANGEMENT PRELIMINARY			
37.0M FLOATING MARKET		PROJECT H2174	HULL No. H2174
TM206-15-001_D		DRAWING REF. I OF 2	SHEET No. I OF 2
DRAWN SAMUEL		CHECKED NANDA	APPROVED [Signature]
DATE 18/9/2017		PAPER SIZE A2	
<small>THIS DRAWING & ALL INFORMATION CONTAINED WITHIN IS RESERVED AS THE PROPERTY OF TECHIES COMPANY LIMITED. ANY PART OF THIS OBJECT MAY NOT BE COPIED, MODIFIED OR TRANSFERRED TO ANY OTHER PARTY WITHOUT ACKNOWLEDGEMENT OF TECHIES CO., LTD.</small>			
D PRELIMINARY	18/9/2017	SAMUEL	NANDA
REV	REVISION DETAILS	DATE	DRN CHECKED APPROVED

PRINCIPLE PARTICULARS

CAPACITIES:		ITEMS:	
LENGTH OVERALL	- 37.00 M	(A) SOUVENIR BOOTHS	- 8 NOS.
LENGTH W.L	- 33.60 M	(B) CAFETERIA	- 1 NO.
MOLDED BREADTH	- 8.00 M	(C) MANAGEMENT OFFICE	- 2 ROOMS
MOLDED DEPTH	- 2.80 M	(D) TRADING COUNTER	- 1 NO.
DESIGN DRAFT	- 1.30 M	(E) MULTIPURPOSE STAGE	- 1 NO.
FRAME SPACING	- 0.6 M	(F) FOOD BOOTH	- 8 NOS.
DISPLACEMENT	- 260 TONNES	(G) HIGH TABLE	- 8 NOS.
FRESH WATER	- 14000 LITERS	(H) ICE-CREAM STAND	- 2 NOS.
SEWAGE	- 14000 LITERS	(I) BEACH SEAT	- 8 NOS.
		(J) MAXIMUM CAPACITY	- 319 PERSONS.