

TECHIES MARINE SERVICE
www.techiesmarine.com

TECHIES MARINE SERVICE

COMPANY PROFILE

www.techiesmarine.com





1. INTRODUCTION

1.1 Company Introduction

Techies Co., Ltd. was founded in 2016 registered as 2535-2016 (YGN), as a marine services provider, enthusiastic for marine design and construction. With a team of internationally experienced Naval Architects and Marine Engineers, we are emphasized to apply our knowledge for Engineering Solutions and providing quality Vessels.

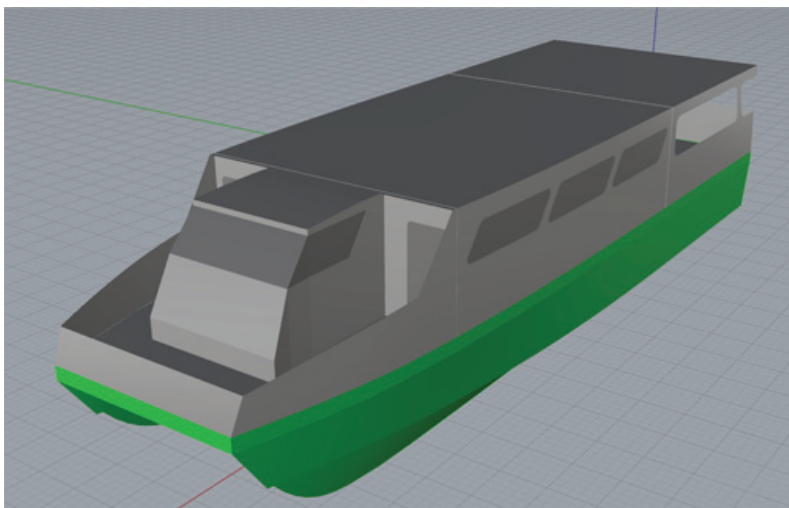
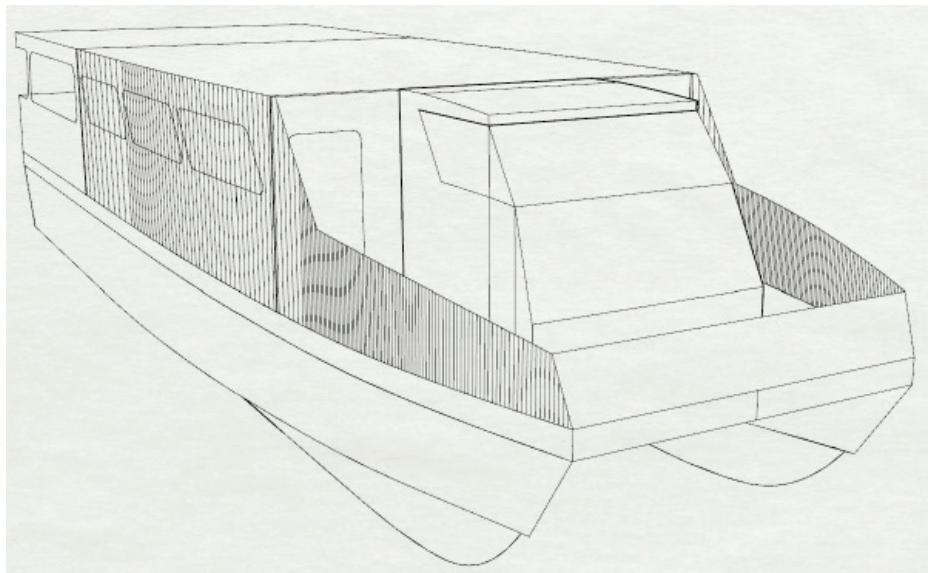
1.2 Visions

Our visionary aim is to escalate the construction standards and quality in local market, seeking partners and opportunities to prove ourselves. But not limited to that, we are also looking to joint ventures with foreign companies as well. Our sole ambition is to provide quality products within reasonable and affordable budget.

1.3 Why Techies?

One of our traits is being resourceful, and we are solving for your various technical challenges for the time being. We can be your trusted one stop service providers (please see the list below for our scope of services) at very reasonable contract prices. We are a group of technically strong Engineers, with wide network for which we can help you with the informations you need even for the projects we are not confident to perform.

If you know what you need, let us help you. Even though you have no idea what you want, let us advise.



3D modelling 20.0m Catamaran, which is suitable for Public Transport, Costal Ferries, Passenger Vessels, etc. Designed by our own Techies Design Team.



2. SCOPE OF SERVICES

Our services are mainly categorized into two sections for the time being: Consultations and Construction:

CONSULTATIONS

As your potential consultants, we can provide you the following technical solutions. We are capable to deliver quality designs according to regulations of IACS members such as: *B. V, ABS, DNV, Lloyd's Register*.

2.1 New Designs:

Just from owner's requirements and budget allowance, we can provide you an optimized, cost effective and complete design package for your new vessel. A new hull as required shall be generated meticulously with all systems and structural designs to grant owner's satisfactory.

2.2 Partially or Detailed Designs:

For fellow Designers, or Ship Constructors, just a selection of consultation is sometimes needed. When the time comes, please let us assist you for better ideas and solutions. From New Hull generating, to specifically, system designs such as Piping, Ventilation, Outfits, Electrical or Arrangement Designs.

2.3 Materials, Costs & Weight Estimations:

As the weight limitation is critical and sensitive for the performance of a vessel, we are here ready to provide you for List of Materials & Machineries, Bills of Quantities, and Weight Limitations and other factors which should be checked before the construction is started.

2.4 Structural Analysis:

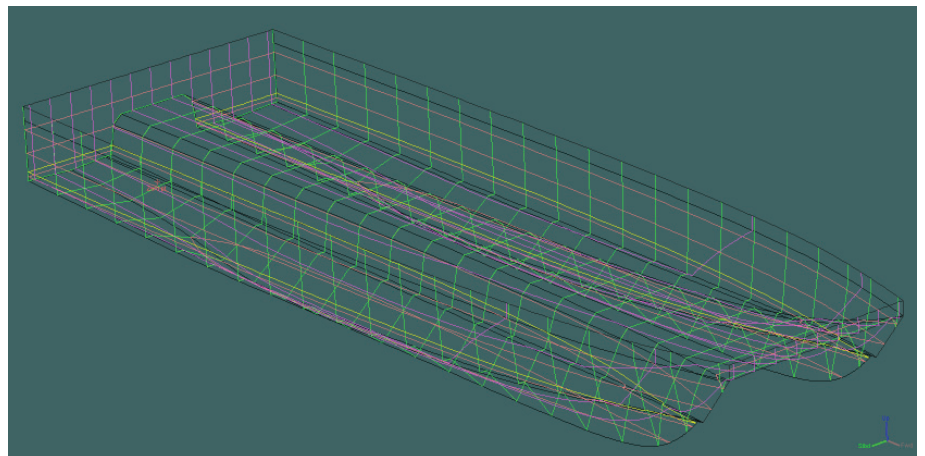
Structural Analysis for whole vessel, Globally or Locally, as per in Class requirement, can be consulted by our engineering team. Specific Parts such as foundations, brackets and rudders are also within our expertise.

2.5 Resistance and Propulsions:

Choosing the Propeller Geometry based on existing Engine and Gearboxes or a complete whole new system can be designed by our team. New vessels with speed warranty shall never be compromised as our working standard.

2.6 Technical Supervisions:

Just as a keen engineering team, we sometimes provide site supervisions for other construction teams. The reason we are doing this is to promote our experience and knowledge and share with fellow builders/contractors within our network.



Developing Lineplan (3D) for 20.0m Catamaran Hull, shown pervious



CONSTRUCTIONS

Our Construction team is well trained and capable of building quality vessels made of both mild steel and aluminium alloys. All parts are CNC plasma cut and welders are of good practice and with class certificates.

Our products shall be of high quality, and managed to get class certificates if requested. *(Only Local Class, DMA and its rules applied in Myanmar but when a vessel is required to be approved by IACS class.)

2.7 Small Vessel Construction (Own Yard)

We are now capable of building small vessels up to 20metre in length overall and 4.5metre in width in our very own fabrication facilities. Our own products will come with Warranties: Hull, Paints and Machineries, at least for one year and a user manual and maintainance.

2.8 Contractor Jobs

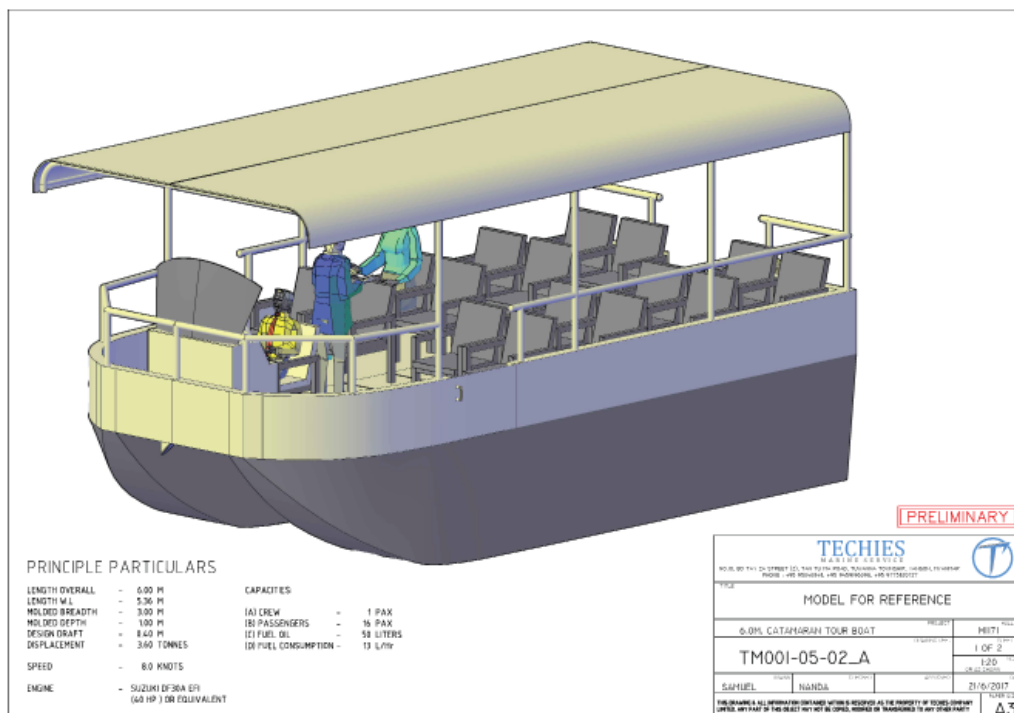
If bigger vessels are to be handled, we can relocate to other shipyards, but with our own team to preserve our own standards for both quality and safety of working project. From Hull Constructions to Propulsion System Installations.

2.9 Repair Projects

For survey intervals, we are doing repairing of old vessels and parts, such as Hull, Structures and Piping and so on.

2.10 Parts Fabrication

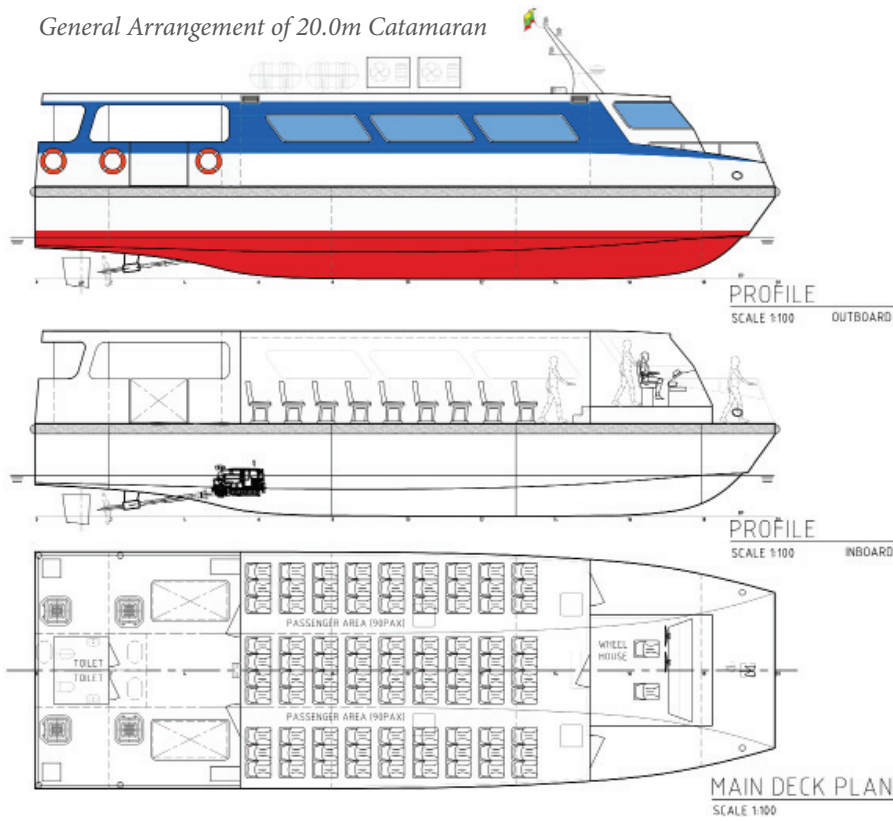
We are now appreciating the orders to accept steel fabrications. Vents, Doors and Windows, Hatches can be fabricated and supplied with build to order contracts.



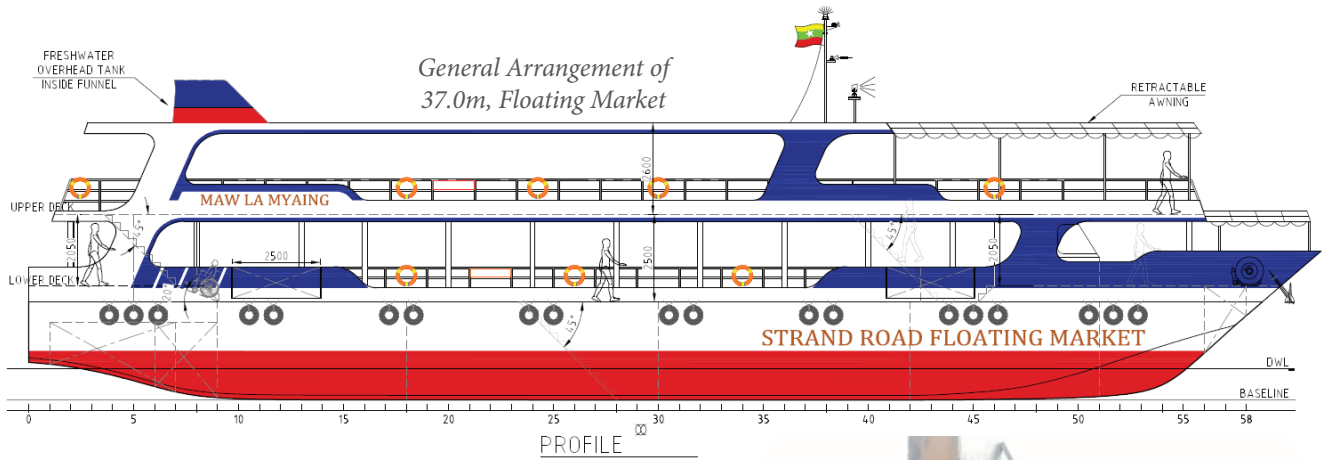
6.0m Catamaran Leisure/Tour Boat



General Arrangement of 20.0m Catamaran



General Arrangement of 37.0m, Floating Market



Construction of 28.0m Pusher Tug. Our Role is to supervise the Construction and Oversee the technical consultations.



1. RECORD OF PROJECTS

As an experienced naval architect and founding director of the Company, let me show the list of my projects and experiences.

Director's Profile

Name - **Nanda Hlaing Myint**
 Qualification - B.Eng (Naval Architecture & Ocean Engineering)
 Last working International Company - Strategic Marine (Singapore)
 Last professional title - Naval Architect

Projects in Singapore,

An experienced Naval Architect, who had been working for a MNC Shipyard, based in Singapore, involved in various types of vessels designing and construction. A list of projects involved or led are shown as below.

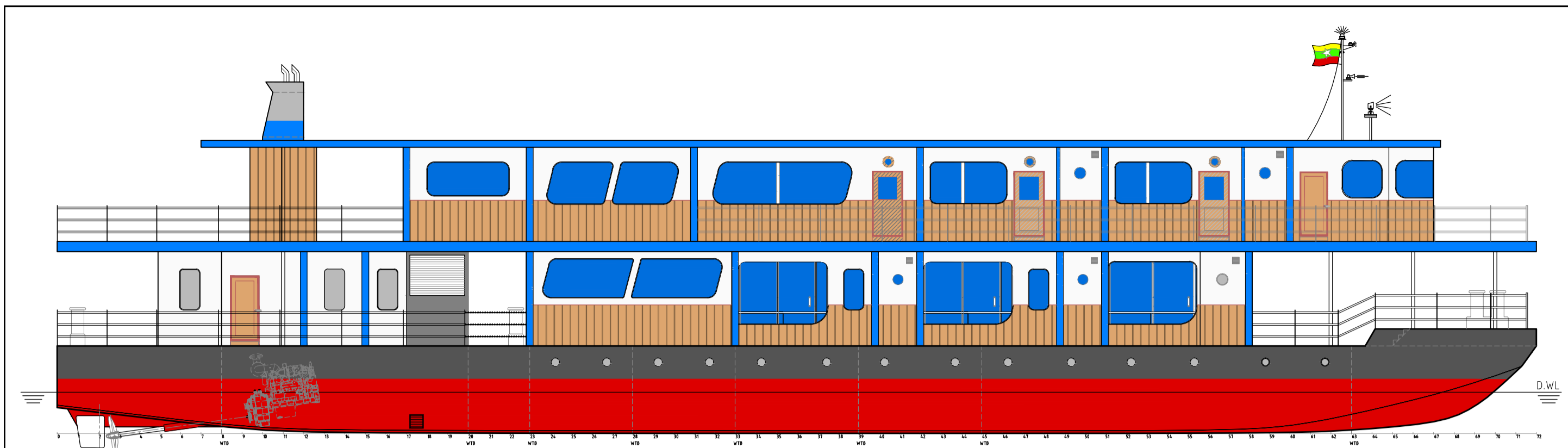
No.	Vessels Type/ Particulars	Year	Clients/ Owners/ Shipyards	Class	Flags	Job Scopes
1	28.0m Self Propelled Twin Screw Bunker Vessel (200 tonnes cargo)	2013	Khee Aluminium	B.V	Singapore	-New Design -Technical Supervision -Design and Construction Coordinating
2	45.0m Self Propelled Tanker (500 tonnes cargo)	2014	Khee Aluminium	B.V	Singapore	-New Design -Technical Supervision
3	15.0m Aluminium Pilot Boat	2013	Everlast Marine	B.V	Singapore	-Technical Supervision -Design and Construction Coordinating
4	24.0m Aluminium Crew Boat	2014	Khee Aluminium	A.B.S	Singapore	-New Design -Technical Supervision
5	26.0m High Speed Patrol Boat (Low Profile/ Stealth)	2015 2016	DSTA, Singapore Navy	DNV	Singapore	-New Design -Technical Supervision -Design and Construction Coordinating
6	26.0m Windfarm Service Catamaran Vessel (Alu Alloy)	2015	Njord Ordin	Lloyd's Register	UK Flag Cat-1	-Design -Design and Construction Coordinating
7	26.0m Windfarm Service Catamaran Vessel (Alu Alloy)	2016	Windea 4	Lloyd's Register	Germany	-Design -Design and Construction Coordinating
8	42.0m Passenger Ferry (Alu Alloy)	2016	Rasheed	Lloyd's Register	St.Vincent	-Design -Design and Construction Coordinating
9	36.0m Passenger Ferry (Hull M/S, Deckhouse Alloy)	2016	Mary. D	B.V	Frence	-Design -Design and Construction Coordinating



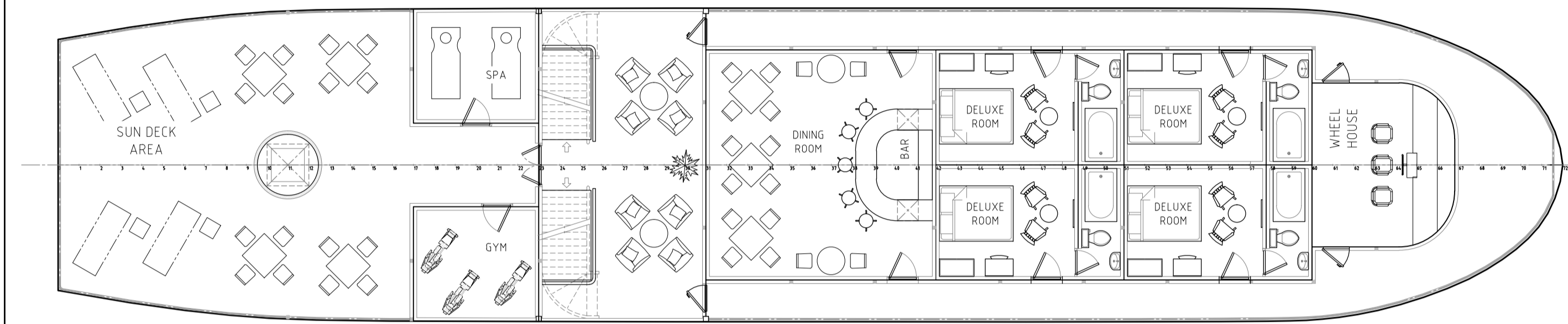
Projects in Myanmar, (working as founding director of Techies)

No.	Vessels Type/ Particulars	Year	Clients/ Owners/ Shipyards	Class	Flags	Job Scopes
1	28.0m Power Tug	2017	Pyae Naing Thu		Myanmar	-Technical Supervision -Design and Construction Coordinating
2	43.0m Landing Craft	2016	Myat Noe Thu		Myanmar	-Technical Supervision -New Design
3	20.0m Catamaran Vessel	2017			Myanmar	-Technical Supervision -New Design
4	26.0m Grab Dredging Pontoon	2017	Green Myanmar Dragon		Myanmar	-Technical Representative for Tendering -Feasibility of Procurement
5	39.0m Self Propelled Hopper Barge	2017	Green Myanmar Dragon		Myanmar	-Technical Representative for Tendering -Feasibility of Procurement
6	36.0m Floating Market	2017	Asia Development Bank (ADB)		Myanmar	-Feasibility of Procurement -Technical Consultations
7	6.0m Leisure Catamaran	2017	Techies Co., Ltd		Myanmar	-Build for Market -New Design

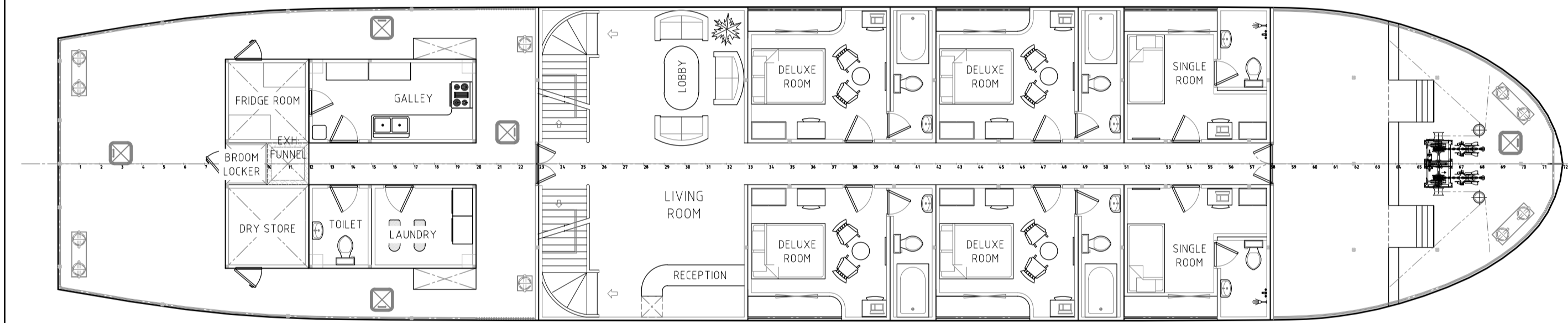
**(Projects since the start of my career and until now. I am looking forward to work for our mutual benefits.)*



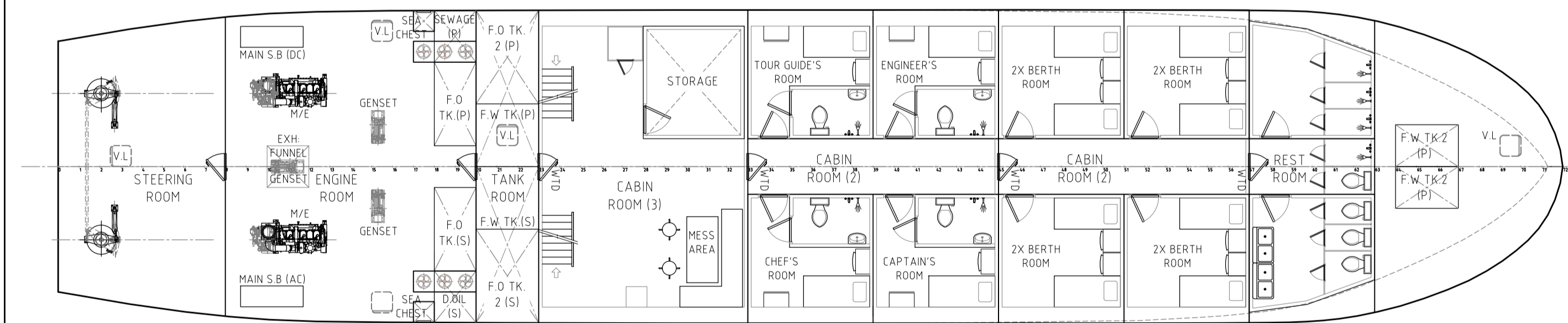
PROFILE
OUTBOARD SCALE 1:120



UPPER DECK PLAN
SCALE 1:120



MAIN DECK PLAN
SCALE 1:120

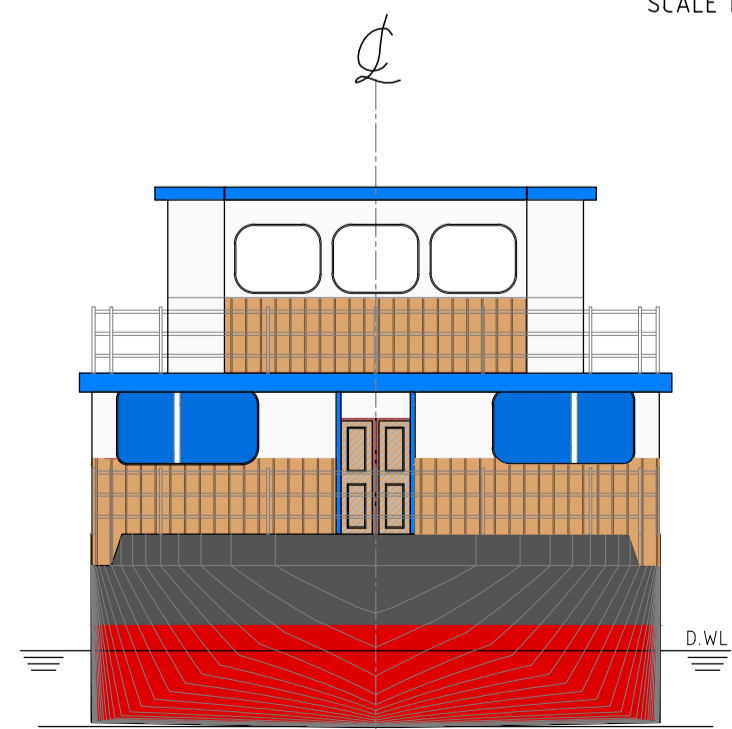


LOWER DECK PLAN
SCALE 1:120

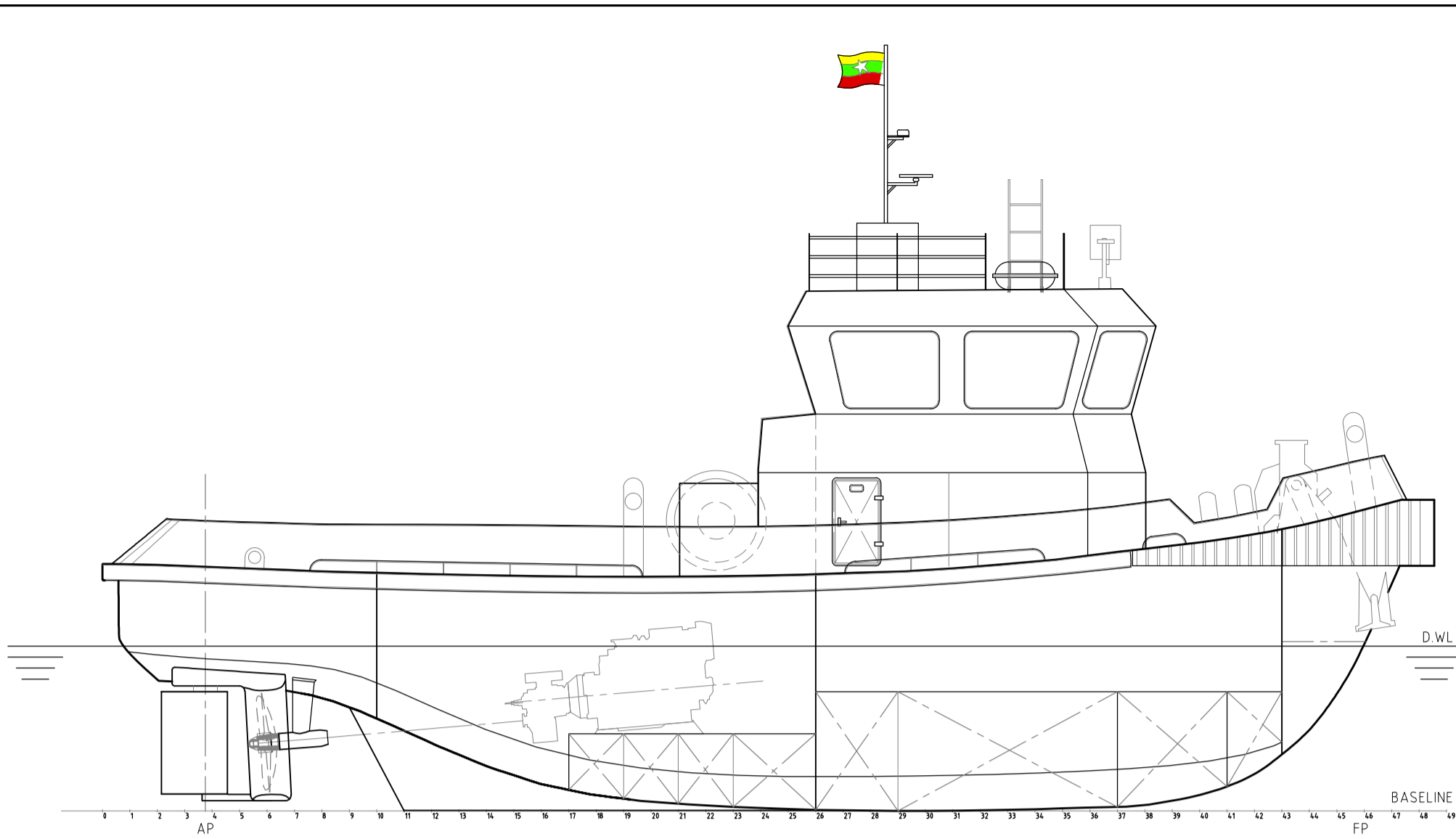
PRINCIPLE PARTICULARS

- LENGTH OVERALL - 43.20 M
- LENGTH WATERLINE - 42.17 M
- BREADTH - 9.00 M
- DEPTH - 2.60 M
- DESIGN DRAFT - 1.20 M
- DISPLACEMENT - 369.00 TONNES
- MAX. SPEED - 10.00 KNOTS
- CRUISE SPEED - 8.00 KNOTS
- MAIN ENGINE - CUMMINS KTA 19-M3
- POWER - 450KW@ 1800 RPM (2 UNITS)
- PROPULSION - 1400 MM DIA. F.P.P
- CAPACITY:
- (A) PASSENGER - 18 PAX
- (B) CREW - 12 PAX
- (C) FUEL OIL - 24,750 LITERS
- (D) FRESH WATER - 18,500 LITERS

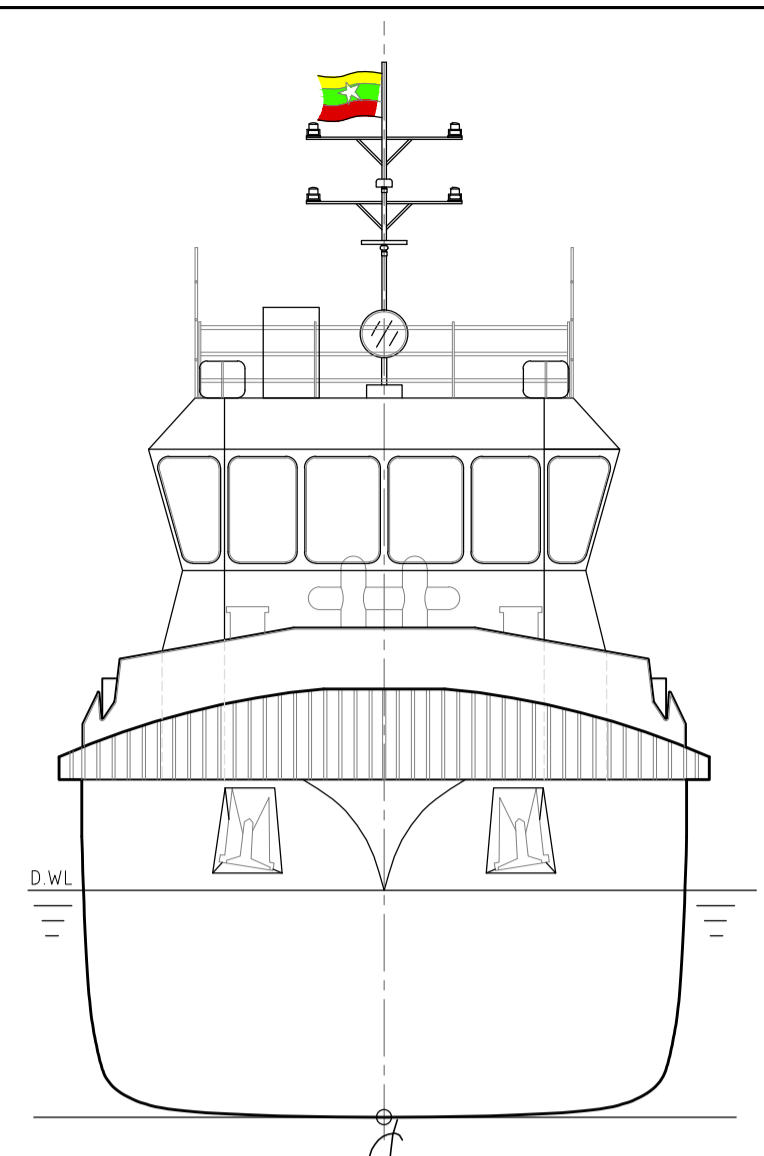
NO.10, BO TAY ZA STREET (2), TAN TU MA ROAD, TUWANNA TOWNSHIP, YANGON, MYANMAR PHONE : +95 95040848, +95 9459196096, +95 9773820727			
GENERAL ARRANGEMENT			
43.2M, INLAND LEISURE VESSEL		PROJECT H2161	HULL No. H2161
TM201-15-001_A		DRAWING REF. 1 OF 1	SHEET No. 1 OF 1
DRAWN MHK	CHECKED NANDA	APPROVED [Signature]	DATE 21/11/2016
THIS DRAWING & ALL INFORMATION CONTAINED WITHIN IS RESERVED AS THE PROPERTY OF TECHIES COMPANY LIMITED. ANY PART OF THIS OBJECT MAY NOT BE COPIED, MODIFIED OR TRANSFERRED TO ANY OTHER PARTY WITHOUT ACKNOWLEDGEMENT OF TECHIES CO., LTD.		PAPER SIZE A2	
REV A	FOR REVIEW & COMMENT	DATE 21/11/2016	DRN MHK CHECKED NANDA APPROVED [Signature]



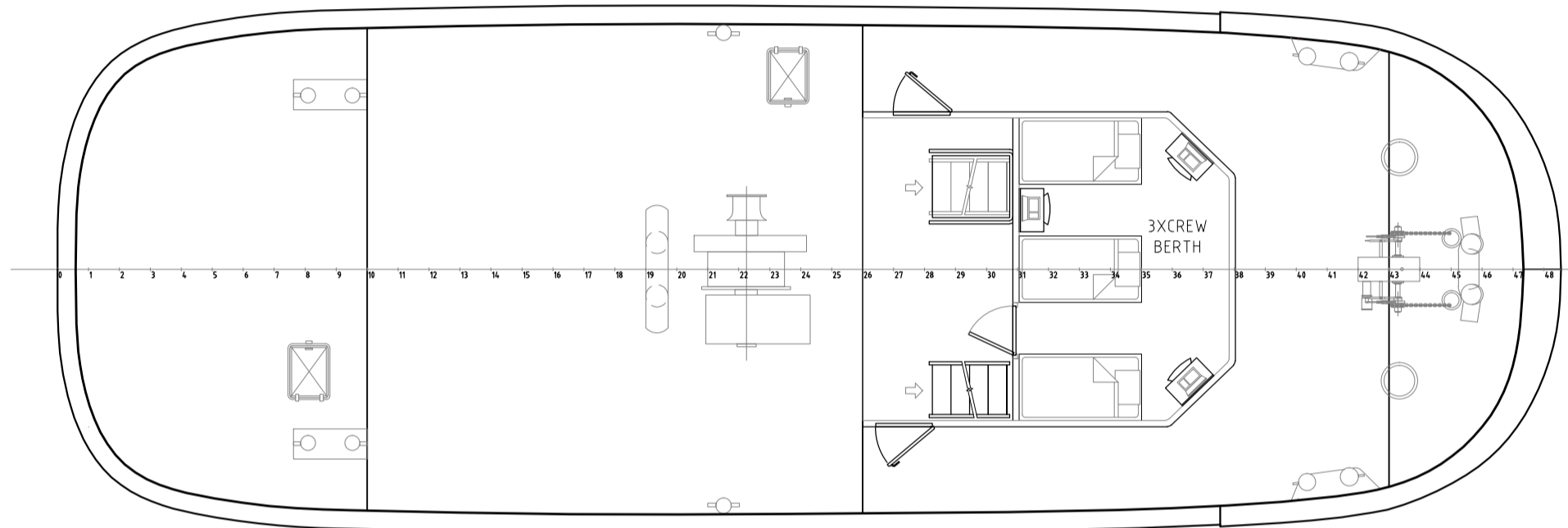
ELEVATION
BODY PLAN SCALE 1:120



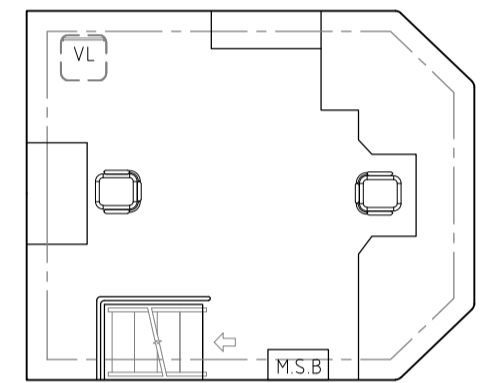
PROFILE
OUTBOARD SCALE 1:100



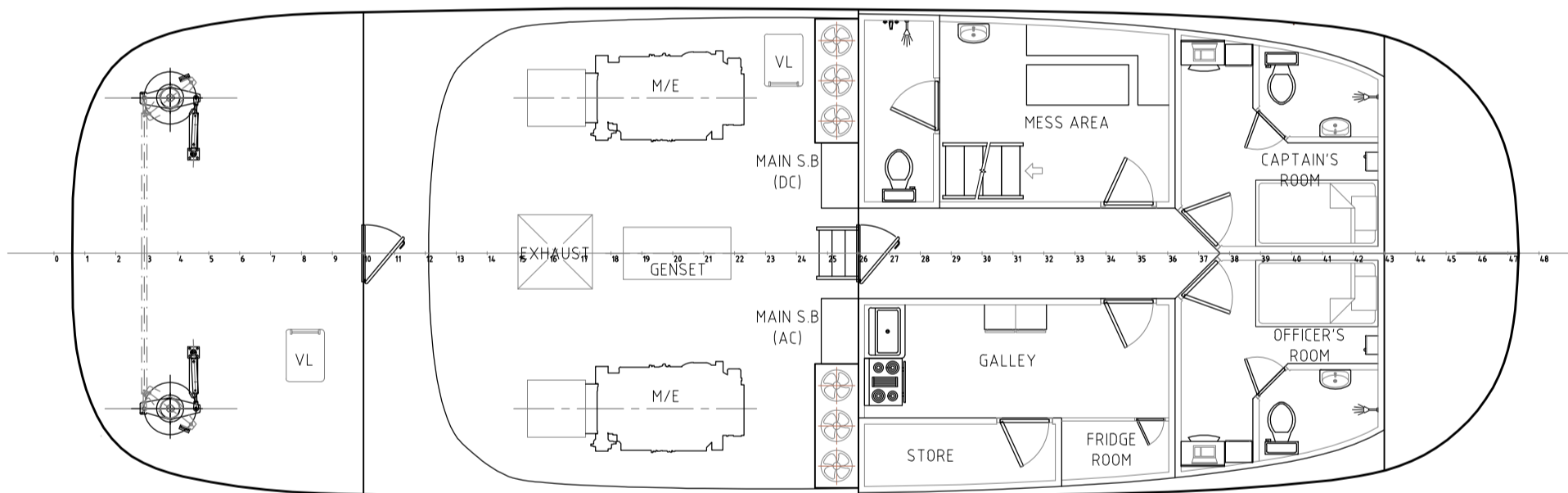
ELEVATION
BODY PLAN SCALE 1:100



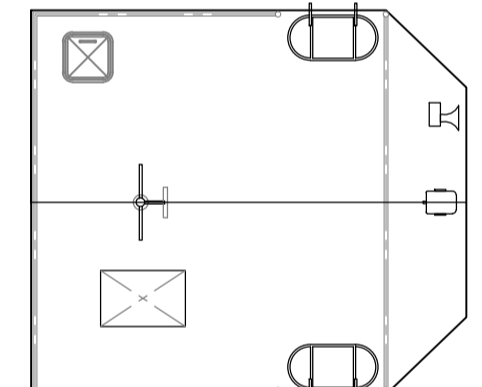
MAIN DECK PLAN
SCALE 1:100



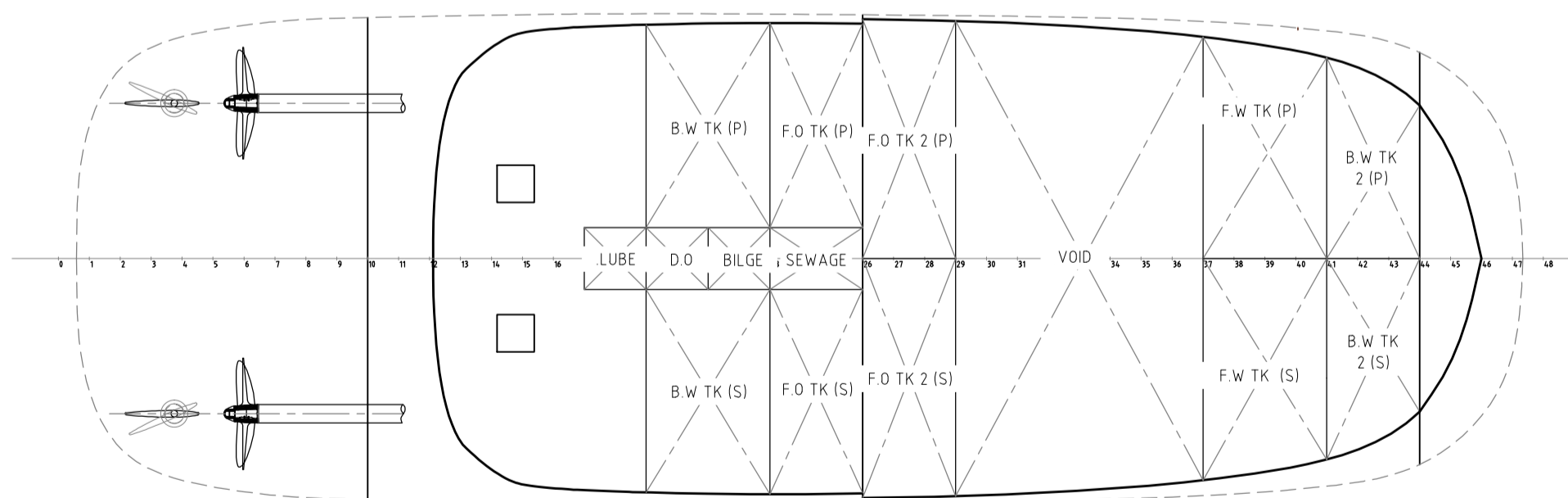
WHEEL HOUSE
SCALE 1:100



LOWER DECK PLAN
SCALE 1:100



ROOF PLAN
SCALE 1:100

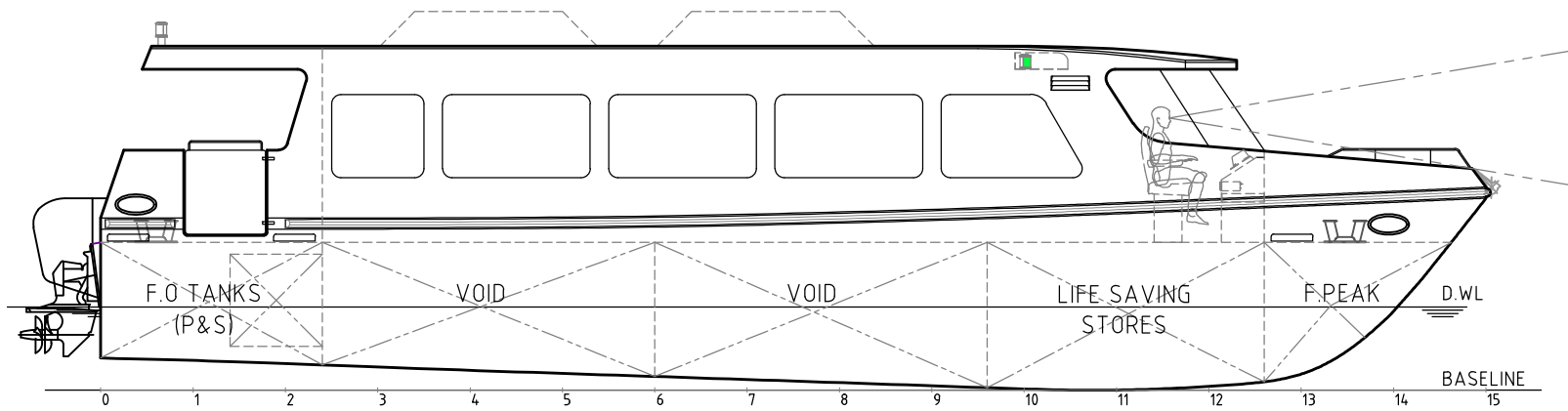


TANK PLAN
SCALE 1:100

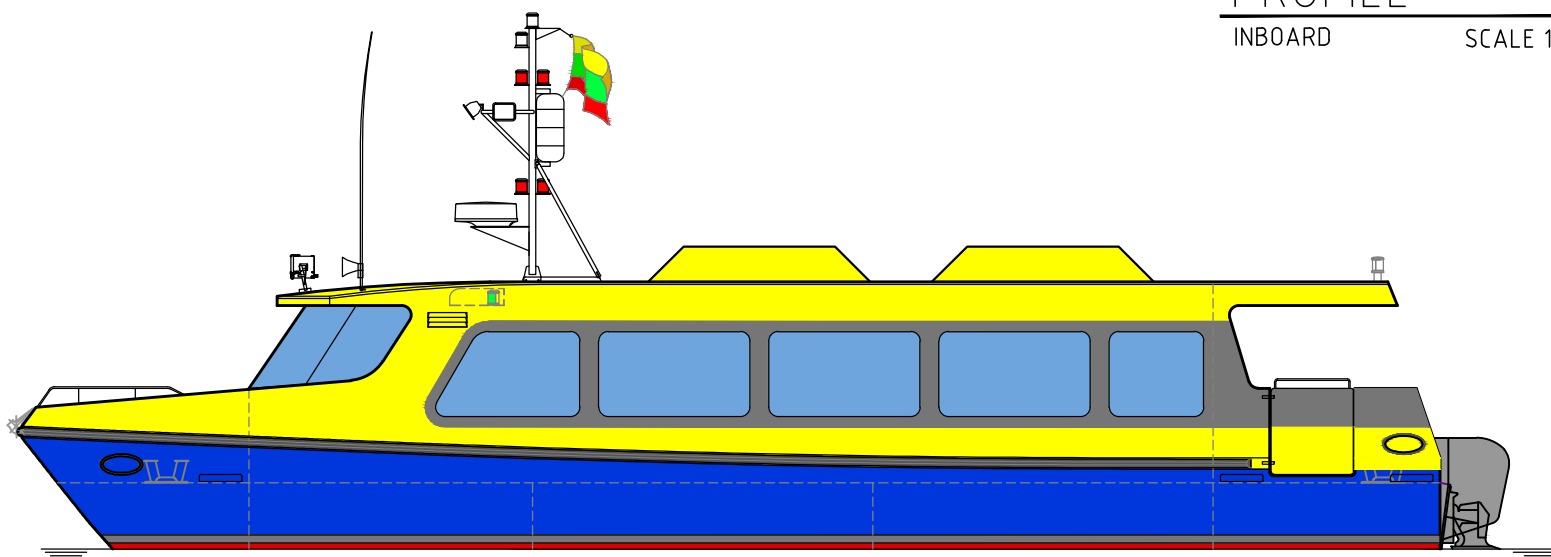
NO.10, BO TAY ZA STREET (2), TAN TU MA ROAD, TUWANNA TOWNSHIP, YANGON, MYANMAR PHONE : +95 95040848, +95 9459196096, +95 9773820727			
GENERAL ARRANGEMENT			
24.2 M HARBOUR TUG		PROJECT TBA	HULL No. TBA
TM401-15-001_A		DRAWING REF. I OF I	SHEET No. I OF I
DRAWN	CHECKED	APPROVED	DATE
THIS DRAWING & ALL INFORMATION CONTAINED WITHIN IS RESERVED AS THE PROPERTY OF TECHIES COMPANY LIMITED. ANY PART OF THIS OBJECT MAY NOT BE COPIED, MODIFIED OR TRANSFERRED TO ANY OTHER PARTY WITHOUT ACKNOWLEDGEMENT OF TECHIES CO., LTD.		PAPER SIZE A2	
A-D1			
REV	REVISION DETAILS	DATE	DRN CHECKED APPROVED

PRINCIPLE PARTICULARS

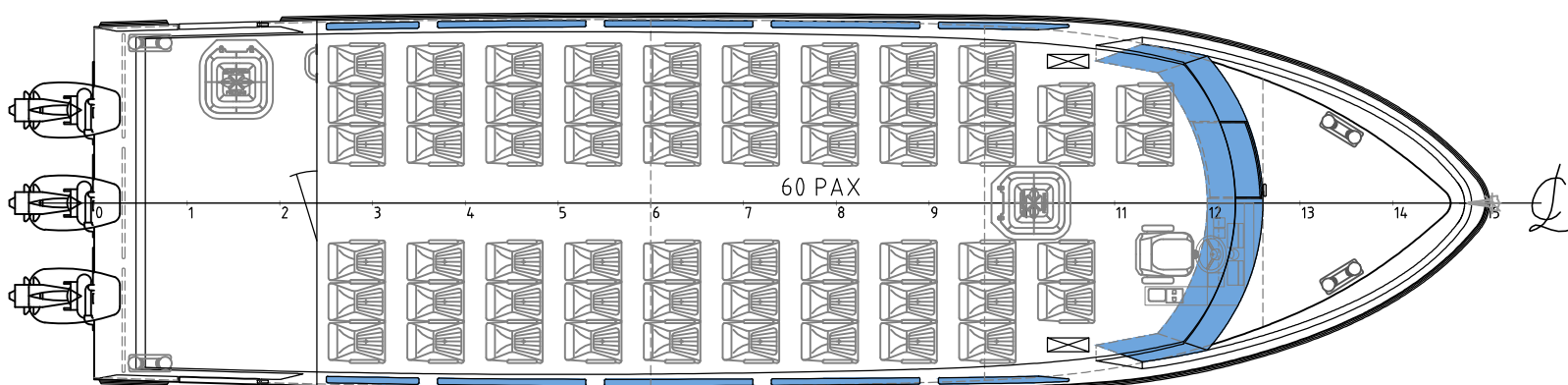
LENGTH OVERALL	-	24.2 M
LENGTH WATERLINE	-	21.1 M
BREADTH	-	8.0 M
DEPTH	-	4.3 M
DESIGN DRAFT	-	3.0 M
DISPLACEMENT	-	34.0 TONNES
MAX. SPEED	-	13 KNOTS
BOLLARD PULL	-	20 TON
MAIN ENGINE	-	CUMMINS KTA 38-M1
POWER	-	2 x 1000 BHP@ 1800 RPM
PROPULSION	-	2 x 1800 MM DIA. F.P.P
CREW	-	5 PAX



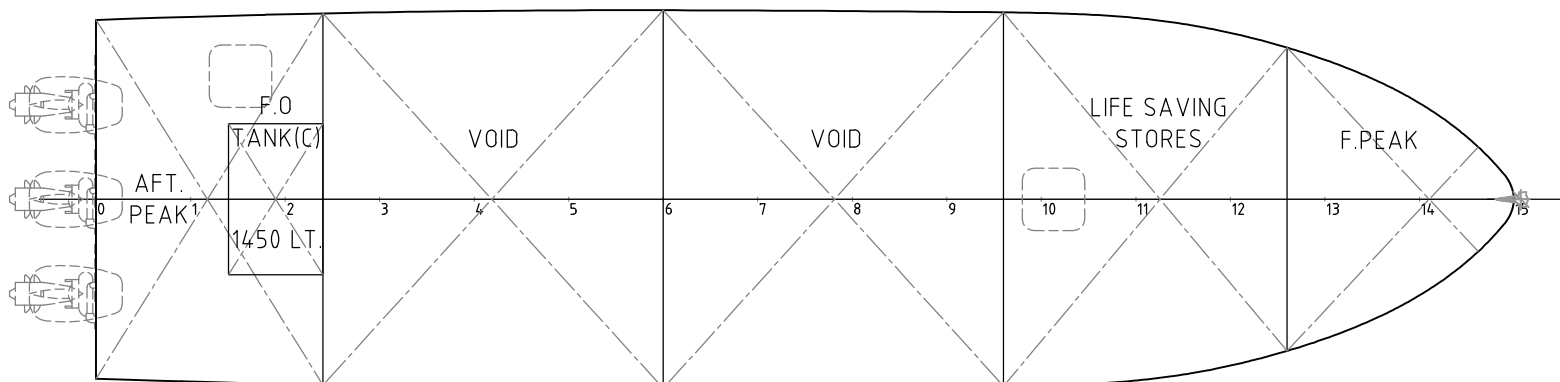
PROFILE
INBOARD SCALE 1:80



PROFILE
OUTBOARD SCALE 1:80



DECK PLAN
INBOARD SCALE 1:80



LOWER DECK PLAN
INBOARD SCALE 1:80

PRINCIPLE PARTICULARS

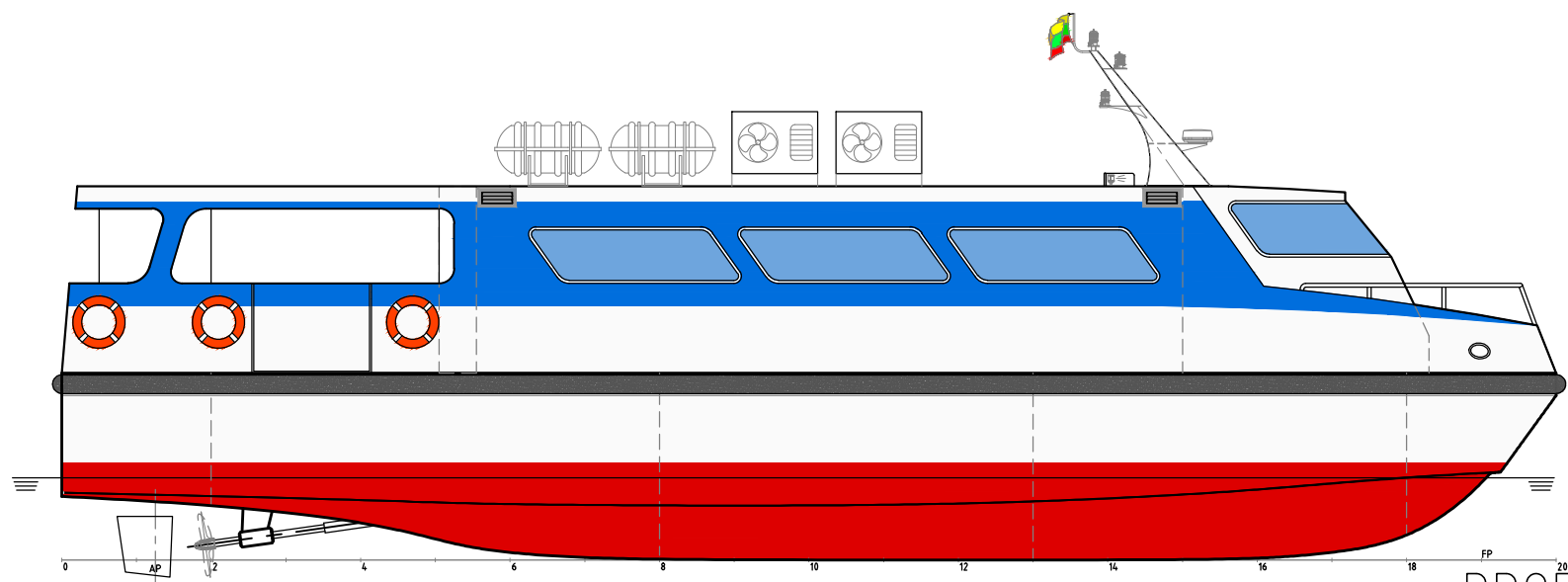
LENGTH OVERALL	-	15.00 M
LENGTH WATERLINE	-	14.00 M
BREADTH	-	4.00 M
DEPTH	-	1.60 M
DESIGN DRAFT	-	0.90 M
DISPLACEMENT	-	19.50 TONNES
MAX: SPEED	-	20.00 KNOTS
CRUISE SPEED	-	18.00 KNOTS
PROPULSION	-	3x YAMAHA F115 (4STROKES)
TOTAL POWER CAPACITY;	-	360 HP
(A) PASSENGER	-	60 PAX
(B) CREW	-	2 PAX
(C) FUEL OIL	-	1,450 LITERS

TECHIES
MARINE SERVICE

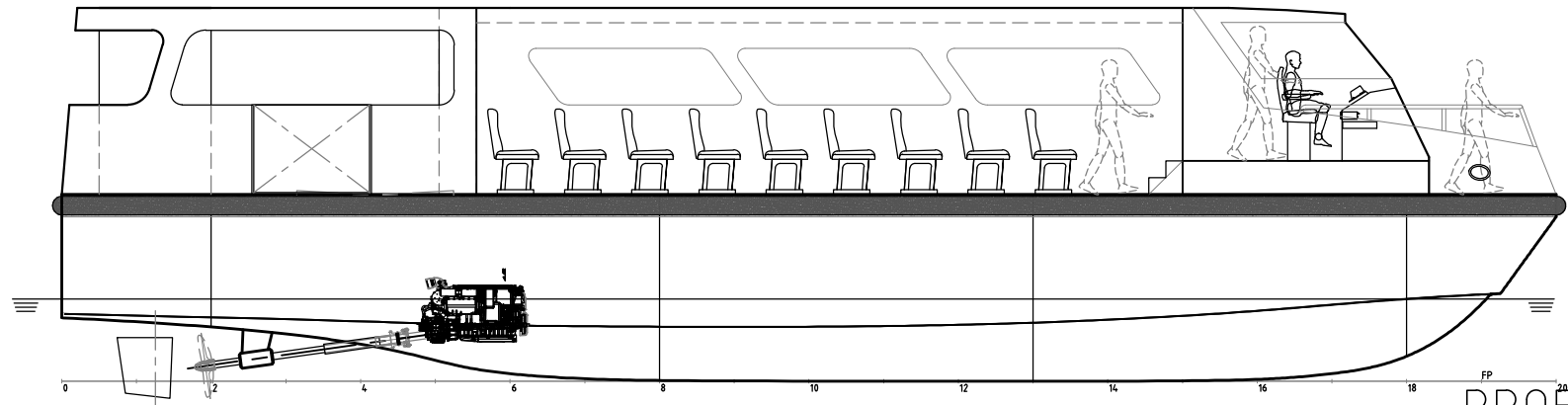


NO.10, BO TAY ZA STREET (2), TAN TU MA ROAD, TUWANNA TOWNSHIP, YANGON, MYANMAR
PHONE : +95 95040848, +95 9459196096, +95 9773820727

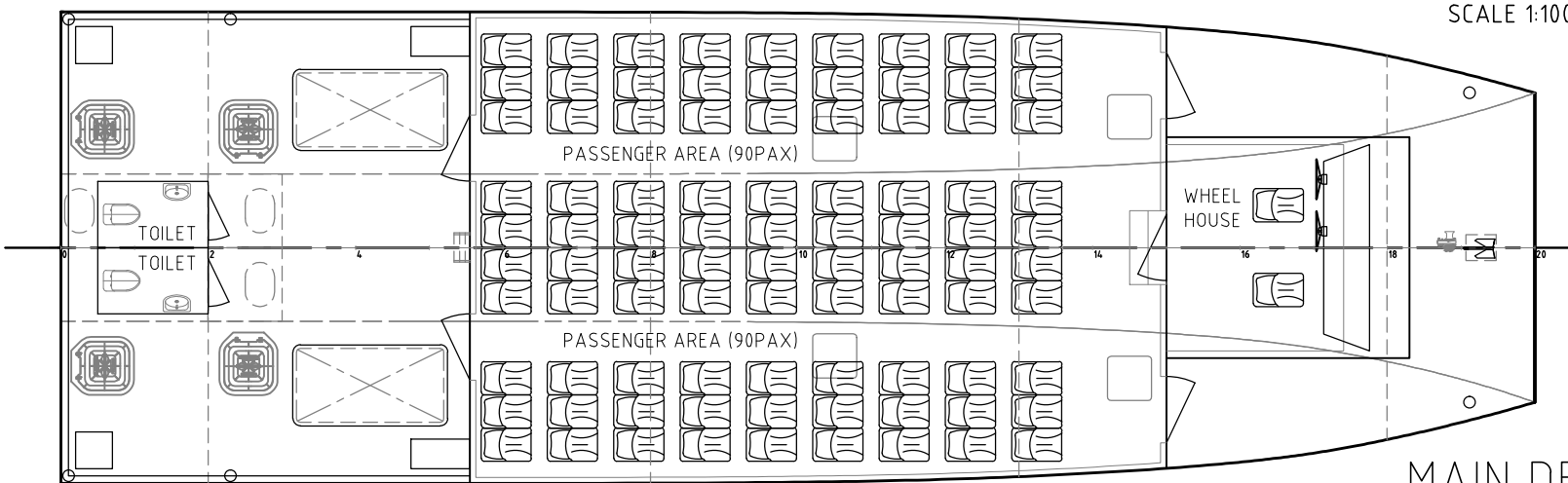
TITLE GENERAL ARRANGEMENT					
PROJECT 15.0M, YANGON WATER BUS			HULL No. TBA		
DRAWING REF. TM202-15-001_A			SHEET No. 1 OF 1		
DRAWN NANDA			CHECKED ASK		
APPROVED			DATE 14/12/2016		
THIS DRAWING & ALL INFORMATION CONTAINED WITHIN IS RESERVED AS THE PROPERTY OF TECHIES COMPANY LIMITED. ANY PART OF THIS OBJECT MAY NOT BE COPIED, MODIFIED OR TRANSFERRED TO ANY OTHER PARTY WITHOUT ACKNOWLEDGEMENT OF TECHIES CO., LTD.					PAPER SIZE A3
REV	FOR REVIEW & COMMENT	DATE	DRN	CHECKED	APPROVED
A		14/12/2016	NANDA	ASK	
	REVISION DETAILS	DATE	DRN	CHECKED	APPROVED



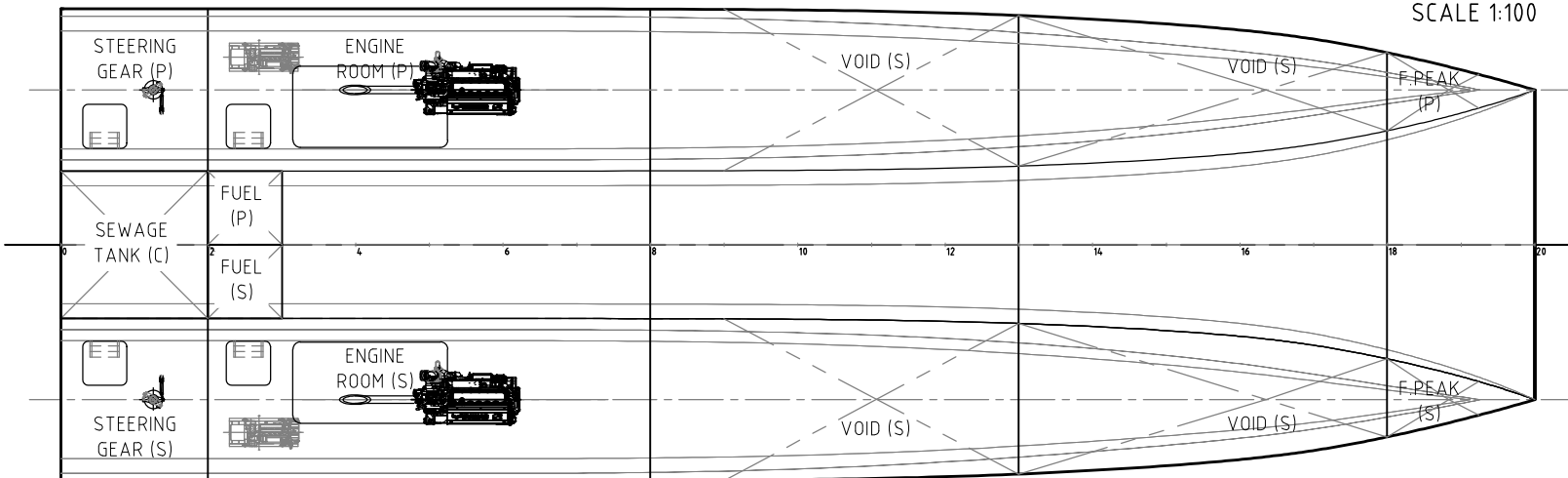
PROFILE
SCALE 1:100 OUTBOARD



PROFILE
SCALE 1:100 INBOARD



MAIN DECK PLAN
SCALE 1:100



BELOW MAIN DECK PLAN
SCALE 1:100

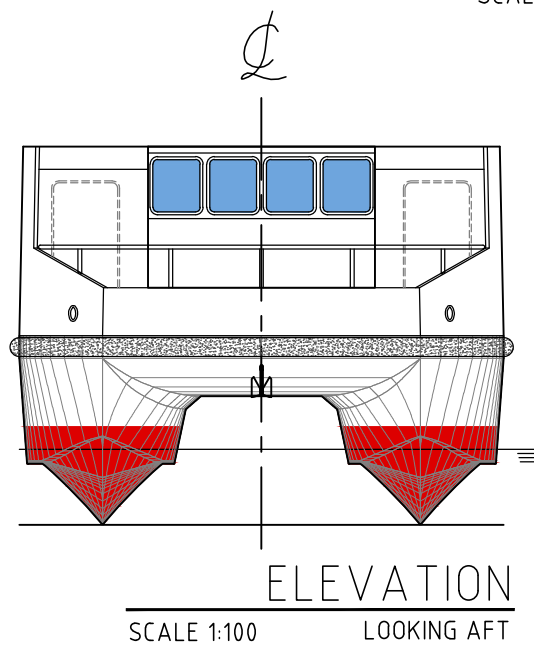
PRELIMINARY

TECHIES
MARINE SERVICE



NO.10, BO TAY ZA STREET (2), TAN TU MA ROAD, TUWANNA TOWNSHIP, YANGON, MYANMAR
PHONE : +95 95040848, +95 9459196096, +95 9773820727

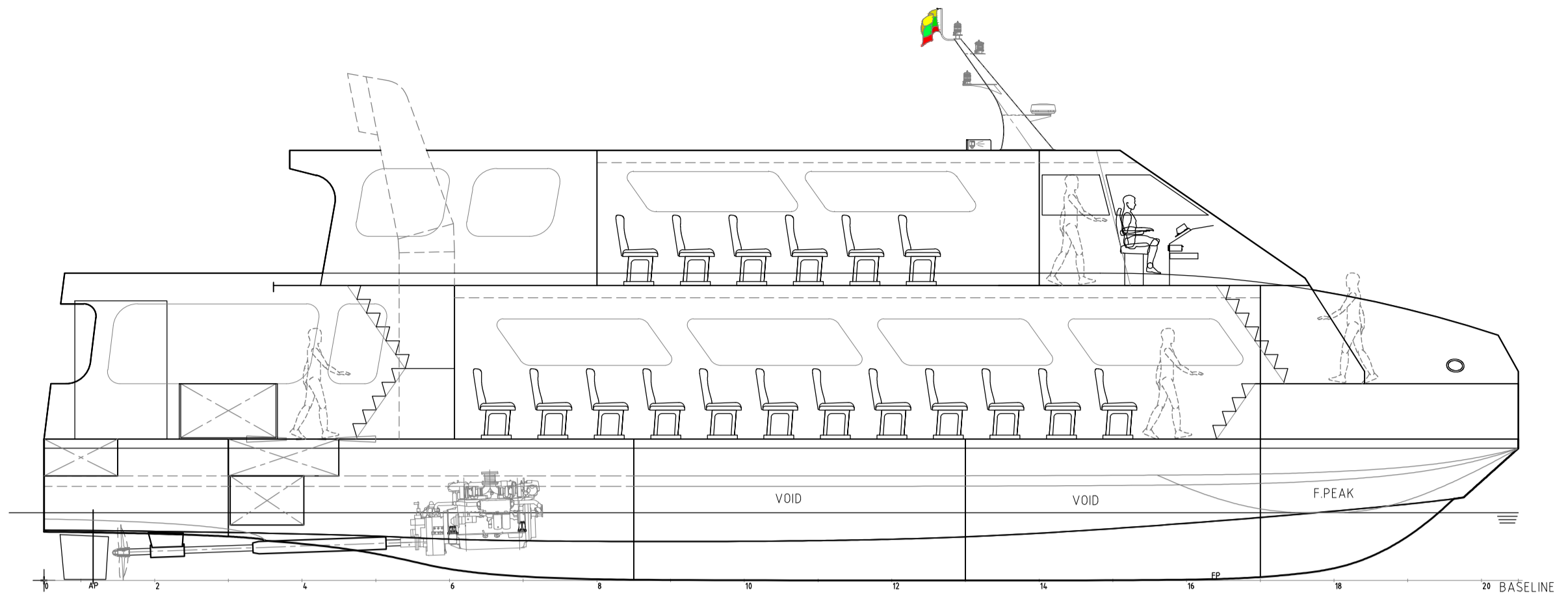
TITLE				GENERAL ARRANGEMENT			
PROJECT		HULL No.		PROJECT		HULL No.	
20.0 M, COASTAL & INLAND FERRY, 90PAX CAT		H2171		PROJECT		HULL No.	
DRAWING REF.		SHEET No.		DRAWING REF.		SHEET No.	
TM203-15-001_A		1 OF 1		DRAWING REF.		SHEET No.	
SCALE		DATE		DRAWING REF.		SHEET No.	
1:1 OR AS SHOWN		17/01/2017		DRAWING REF.		SHEET No.	
DRAWN	CHECKED	APPROVED	DATE	DRAWN	CHECKED	APPROVED	DATE
MHK	NANDA	NANDA	17/01/2017	MHK	NANDA	NANDA	17/01/2017
PAPER SIZE				PAPER SIZE			
A3				A3			
THIS DRAWING & ALL INFORMATION CONTAINED WITHIN IS RESERVED AS THE PROPERTY OF TECHIES COMPANY LIMITED. ANY PART OF THIS OBJECT MAY NOT BE COPIED, MODIFIED OR TRANSFERRED TO ANY OTHER PARTY WITHOUT ACKNOWLEDGEMENT OF TECHIES CO., LTD.				THIS DRAWING & ALL INFORMATION CONTAINED WITHIN IS RESERVED AS THE PROPERTY OF TECHIES COMPANY LIMITED. ANY PART OF THIS OBJECT MAY NOT BE COPIED, MODIFIED OR TRANSFERRED TO ANY OTHER PARTY WITHOUT ACKNOWLEDGEMENT OF TECHIES CO., LTD.			
REV	PRELIMINARY STATE	DATE	17/01/2017	DRN	CHECKED	APPROVED	
REVISION DETAILS		DATE		DRN		CHECKED APPROVED	



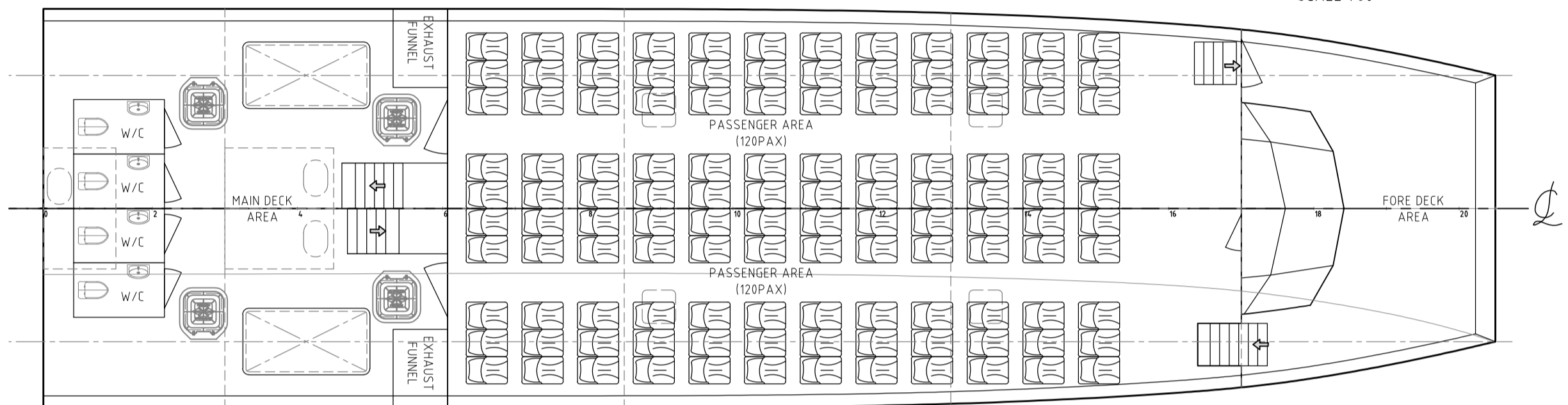
ELEVATION
SCALE 1:100 LOOKING AFT

PRINCIPLE PARTICULARS

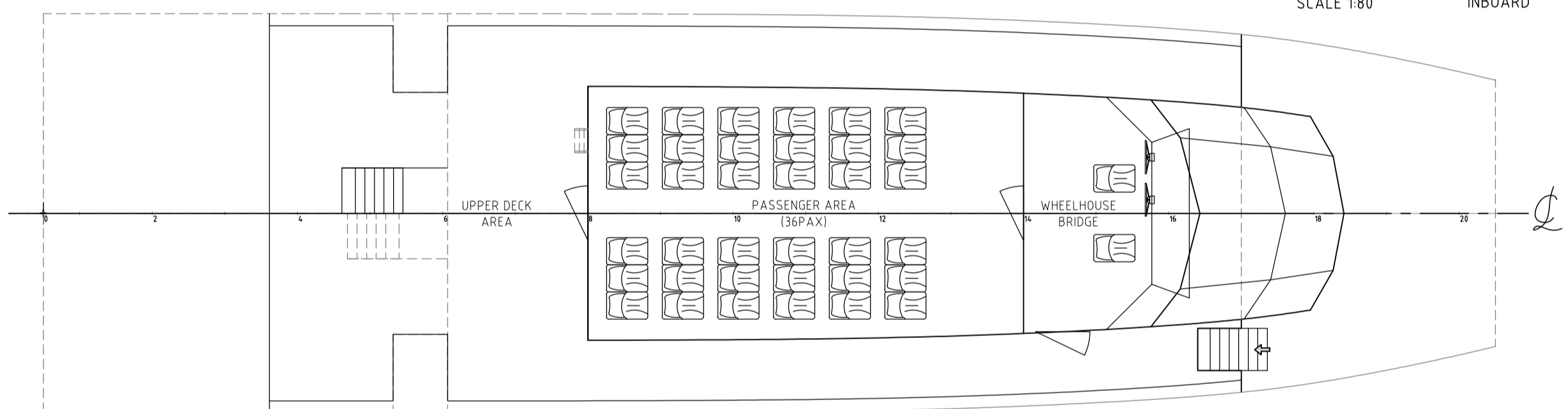
LENGTH OVERALL	-	20.00 M
LENGTH WATERLINE	-	19.06 M
BREADTH	-	6.40 M
DEPTH	-	2.50 M
DESIGN DRAFT	-	1.10 M
DISPLACEMENT	-	35.20 TONNES
MAX: SPEED	-	18.00 KNOTS
CRUISING SPEED	-	14.00 KNOTS
ENGINE	-	YANMAR 6YL400
POWER	-	400 MHP x 2
GEARBOX	-	KMH61A2 (8°)
RATIO	-	2.43 : 1
CLASS	-	BREAU VERITAS
(A) CREW	-	3 PAX
(B) PASSENGERS	-	90 PAX
(C) FUEL OIL	-	1600 LITERS
(D) FUEL CONSUMPTION	-	48 L/HR



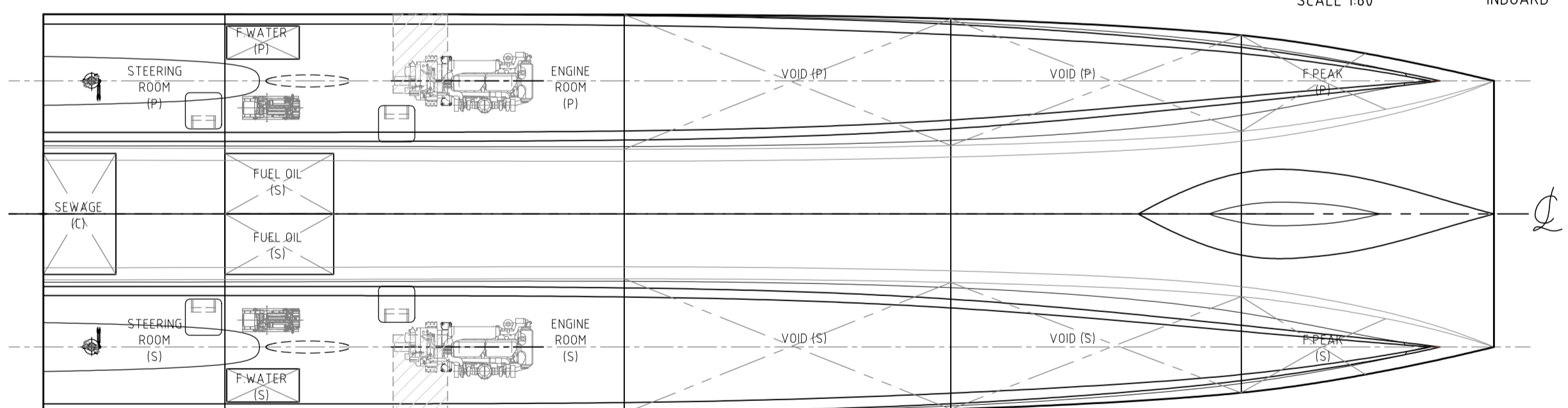
PROFILE
SCALE 1:80 INBOARD



MAIN DECK PLAN
SCALE 1:80 INBOARD



UPPER DECK PLAN
SCALE 1:80 INBOARD



BELOW MAIN DECK
SCALE 1:80 INBOARD

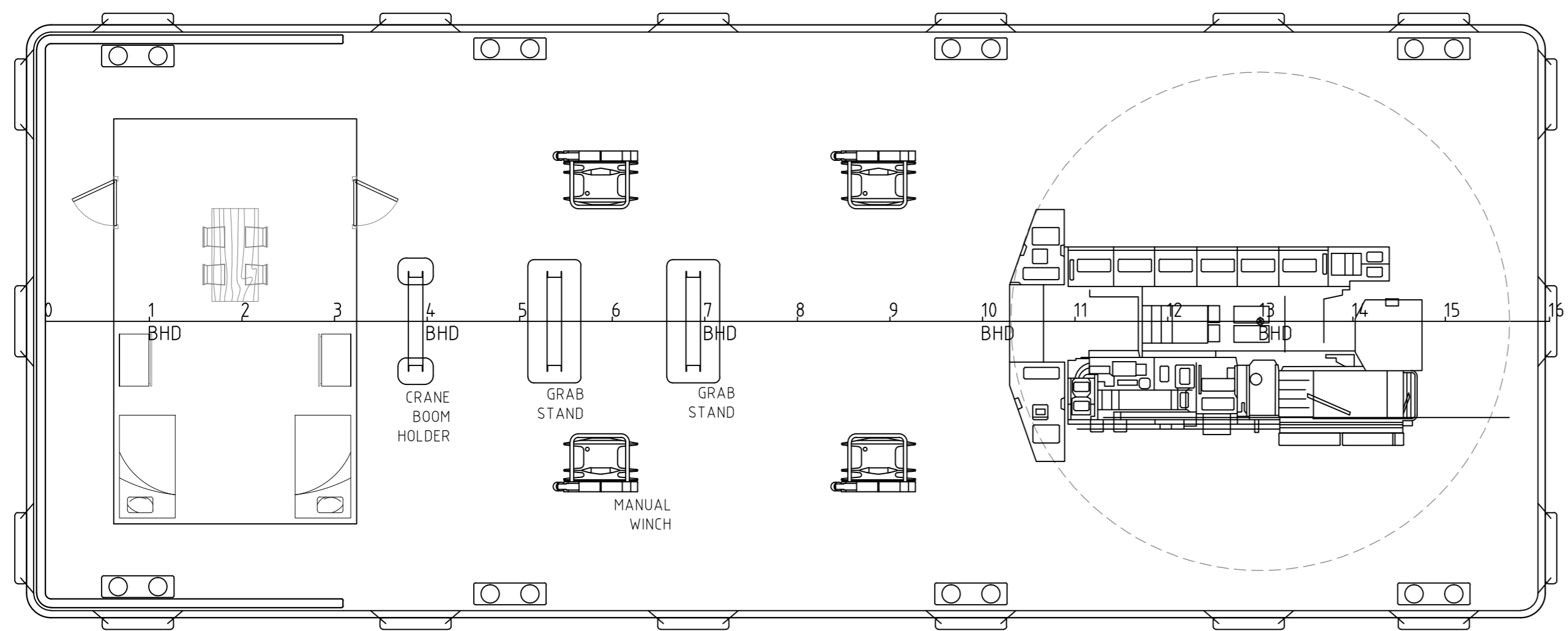
PRINCIPLE PARTICULARS

LENGTH OVERALL - 24.00 M
 LENGTH WATERLINE - 22.70 M
 BREADTH - 6.60 M
 DEPTH - 2.30 M
 L/SHIP DRAFT - 1.07 M
 L/SHIP DISPLACEMENT - 42.50 TONNES
 DESIGN DRAFT - 1.28 M
 DESIGN DISPLACEMENT - 59.00 TONNES

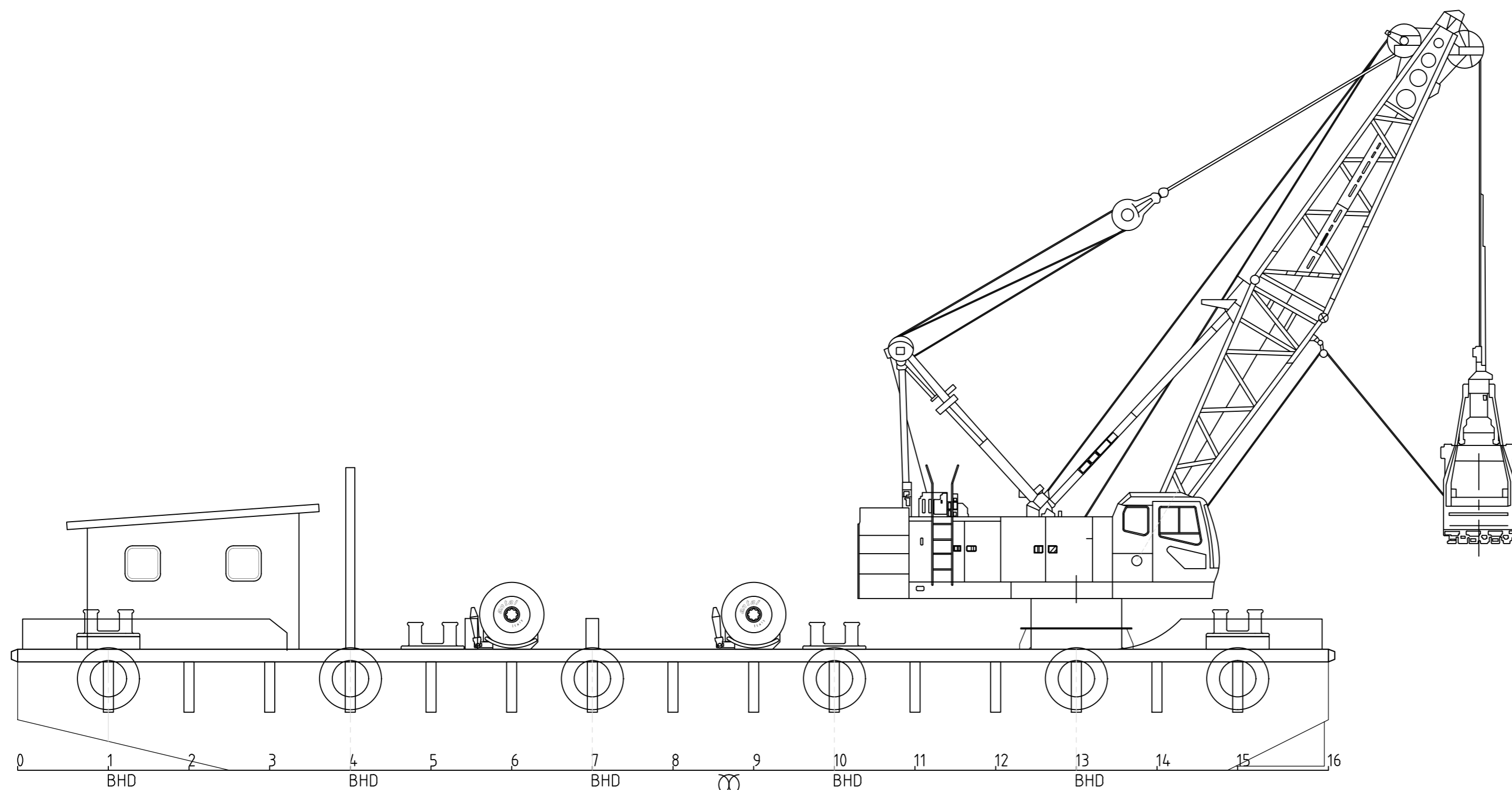
CAPACITIES
 (A) CREW - 3 PAX
 (B) PASSENGERS - 156 PAX
 (C) FUEL OIL - 2000 LITERS
 (D) FUEL CONSUMPTION - 200 L/Hr

MAX. SPEED - 22.00 KNOTS
 DESIGN SPEED - 20.00 KNOTS
 ENGINE - 6YHYM-WET (YANMAR)
 POWER - 700 BHP x 2
 GEARBOX - YXH-160 @1:1.97
 PROPULSION - 860 MM DIA. F.P.P
 CLASS REGULATIONS - ABS (HSC)

NO.10, BO TAY ZA STREET (2), TAN TU MA ROAD, TUWANNA TOWNSHIP, YANGON, MYANMAR PHONE : +95 95040848, +95 9459196096, +95 9773520727			
GENERAL ARRANGEMENT			
PROJECT: 24.0 M, PASSENGER CATAMARAN		HULL No. H2171	
DRAWING REF.: TM203-15-001_LB		SHEET No. 1 OF 1	
DRAWN: MHK		SCALE: 1:1 OR AS SHOWN	
CHECKED: NANDA		DATE: 25/01/2017	
APPROVED: NANDA		PAPER SIZE: A2	
THIS DRAWING & ALL INFORMATION CONTAINED WITHIN IS RESERVED AS THE PROPERTY OF TECHIES COMPANY LIMITED. ANY PART OF THIS OBJECT MAY NOT BE COPIED, MODIFIED OR TRANSFERRED TO ANY OTHER PARTY WITHOUT ACKNOWLEDGEMENT OF TECHIES CO., LTD.			
B	PRELIMINARY STATE	25/01/2017	MHK NANDA NANDA
REV	REVISION DETAILS	DATE	DRN CHECKED APPROVED



MAIN DECK PLAN
SCALE 1:80



PROFILE
SCALE 1:80

PRINCIPLE PARTICULARS

LENGTH OVERALL	- 26	M
BREADTH	- 10	M
DEPTH	- 2.4	M
DRAFT	- 1.2	M
CREW	- 4	

MAIN PARTICULARS OF CLAMSHELL CRANE;

GROSS RATED LOAD	- 10	TON
BUCKET CAPACITY	- 2.5	CUBIC METRE
BOOM LENGTH	- 13	M
WORKING RADIUS	- 11.6	M (MAX)
DREDGING DEPTH	- 36	M (MAX)

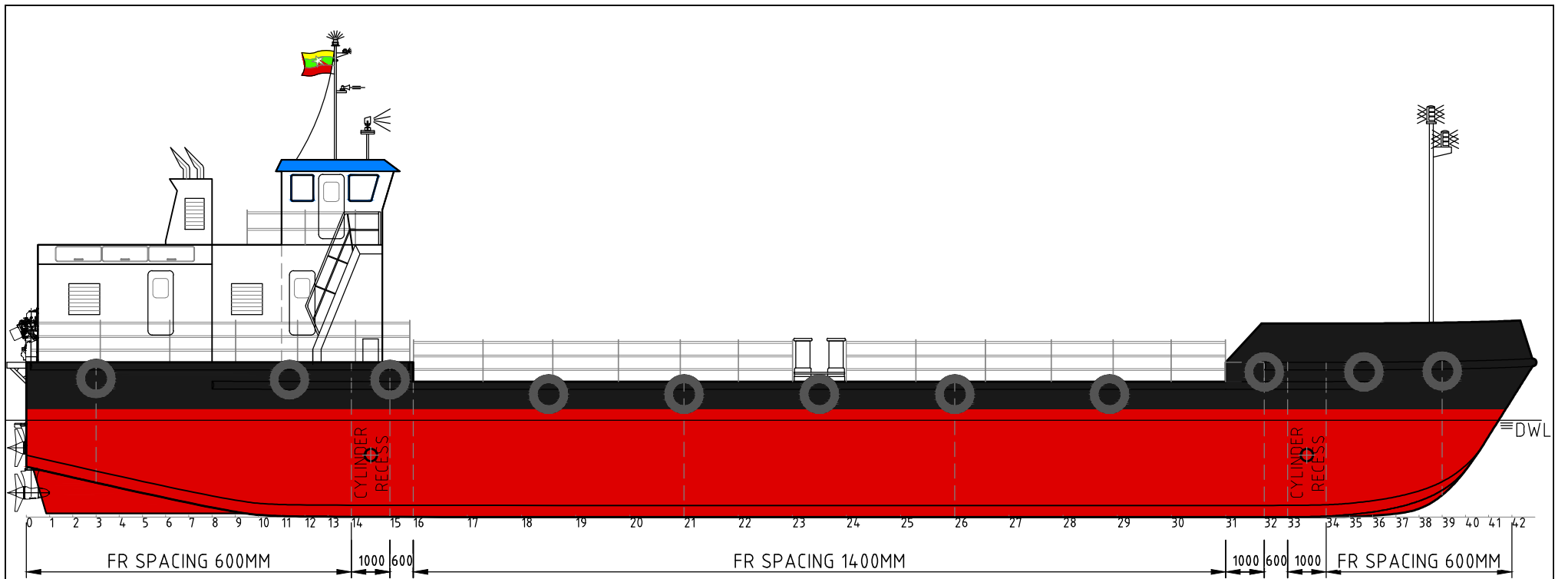
MAIN DECK FITTINGS;

ANCHOR	- 4	NOS
MANUL WINCH	- 4	SETS
MOORING ROPE	- 4	SETS
DOUBLE BOLLARD	- 8	NOS
CRANE BOOM STAND	- 1	NO
ACCOMODATION SPACE	- 1	UNIT

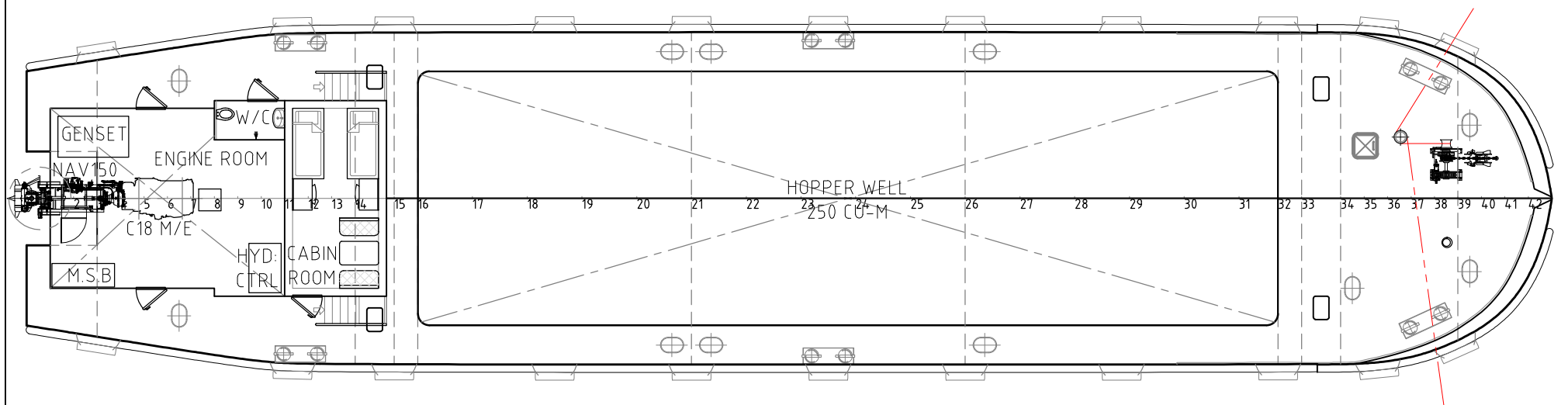
PRELIMINARY

<small>NO.10, BO TAY ZA STREET (2), TAN TU MA ROAD, TUIWANNA TOWNSHIP, YANGON, MYANMAR PHONE : +95 95040848, +95 9459196096, +95 9773820727</small>		
GENERAL ARRANGEMENT		
PROJECT	HULL NO.	
26.0M GRAB DREDGER	H6172	
DRAWING REF.	SHEET NO.	
TM603-15-001_A	1 OF 1	
SCALE	DATE	
1:80	24/05/2017	
OR AS SHOWN		
DRAWN	CHECKED	APPROVED
SAMUEL	NANDA	NANDA
<small>THIS DRAWING & ALL INFORMATION CONTAINED WITHIN IS RESERVED AS THE PROPERTY OF TECHIES COMPANY LIMITED. ANY PART OF THIS OBJECT MAY NOT BE COPIED, MODIFIED OR TRANSFERRED TO ANY OTHER PARTY WITHOUT ACKNOWLEDGEMENT OF TECHIES CO., LTD.</small>		<small>PAPER SIZE</small> A2

REV	REVISION DETAILS	DATE	DRN	CHECKED	APPROVED
A	FOR REVIEW & COMMENT	24/5/2017	SAMUEL	NANDA	NANDA



PROFILE
OUTBOARD SCALE 1:150



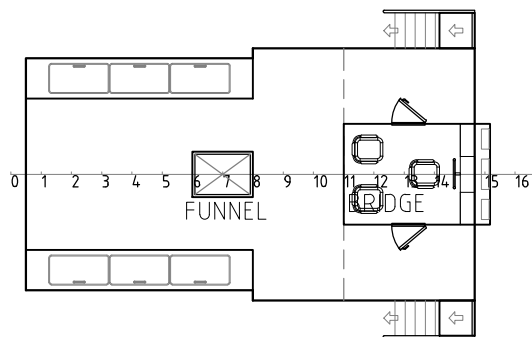
MAIN DECK PLAN
SCALE 1:150

PRINCIPLE PARTICULARS:

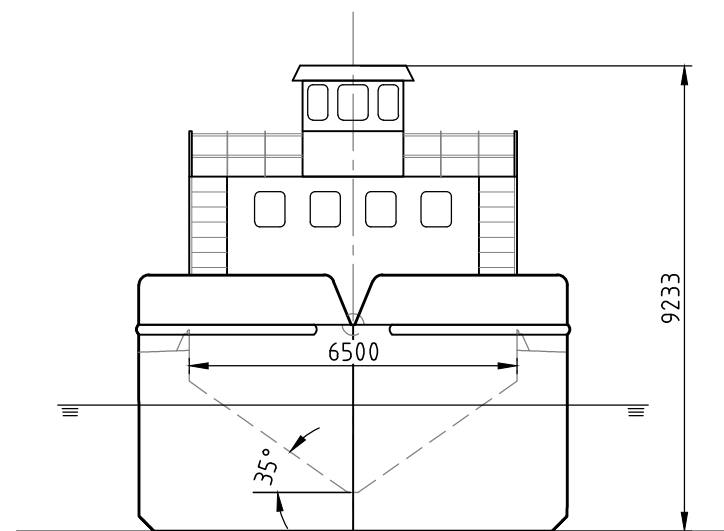
- MLD LENGTH - 39.00 M
- MLD DEPTH - 4.00 M
- MLD DEPTH (WELL) - 3.50 M
- MLD BREADTH - 8.50 M
- DESIGN W.L - 2.50 M
- DISPLACEMENT - 760 TONNES
- DEADWEIGHT - 500 TONNES
- HOPPER WELL - 250 M³

- MAIN ENGINE - 370kW (CAT C18 ACERT)
- GEAR BOX - 1:3.366 RATIO (SCHOTTLE)
- PROPULSION - NAV 150 ONATRA (SCHOTTLE)

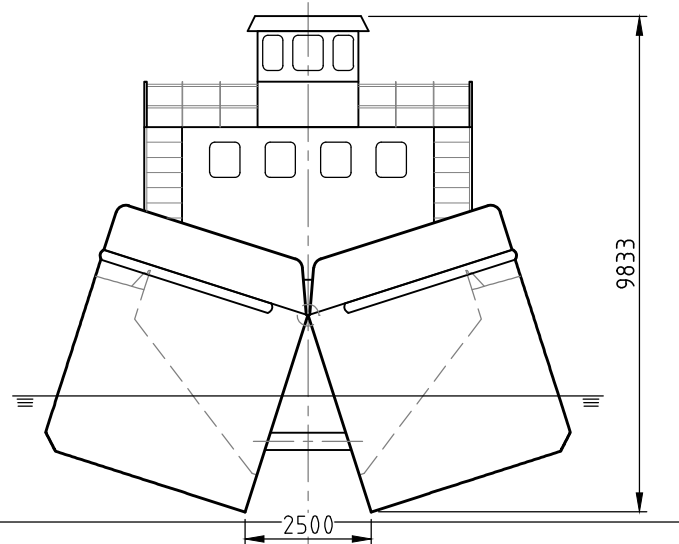
- CREW - 4 PAX
- FUEL OIL - 8.00 M³
- FRESH WATER - 4.00 M³



WHEEL HOUSE DECK
SCALE 1:150



ELEVATION
CLOSED SCALE 1:150



ELEVATION
OPENED SCALE 1:150

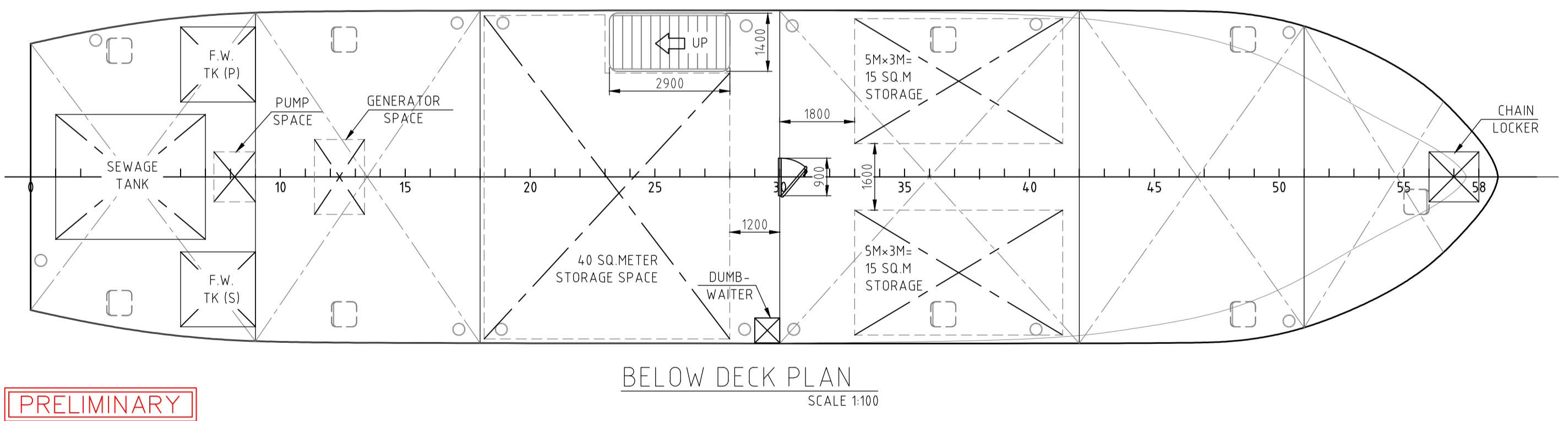
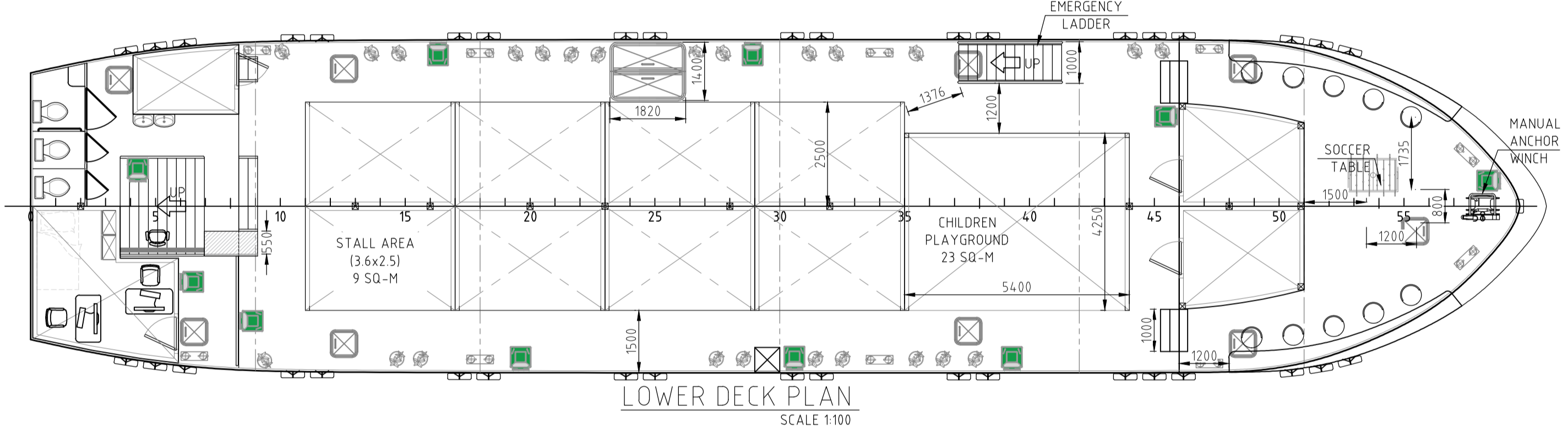
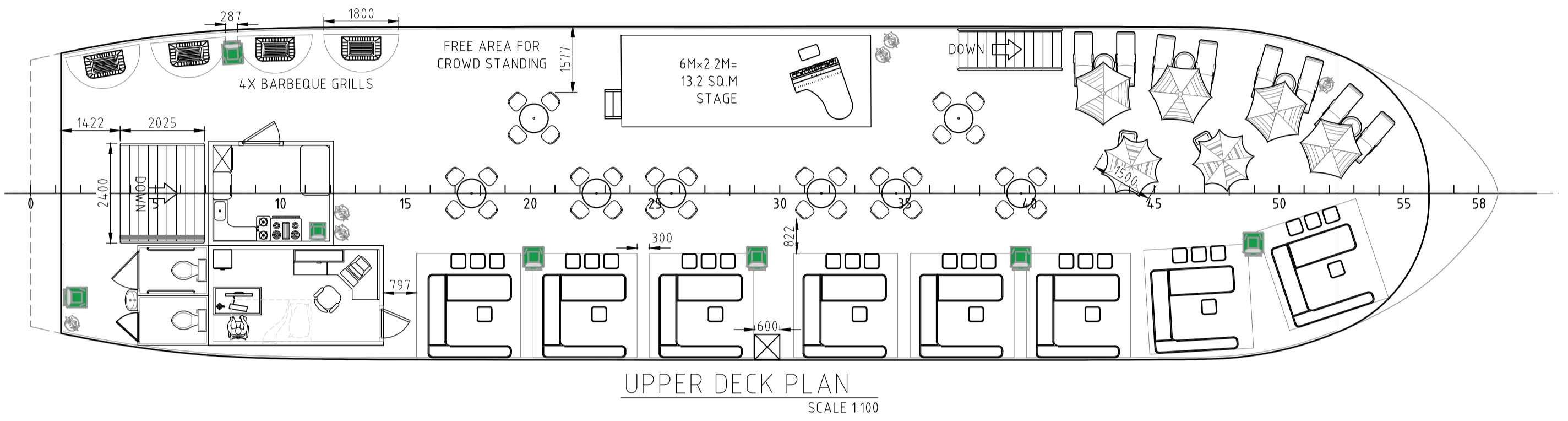
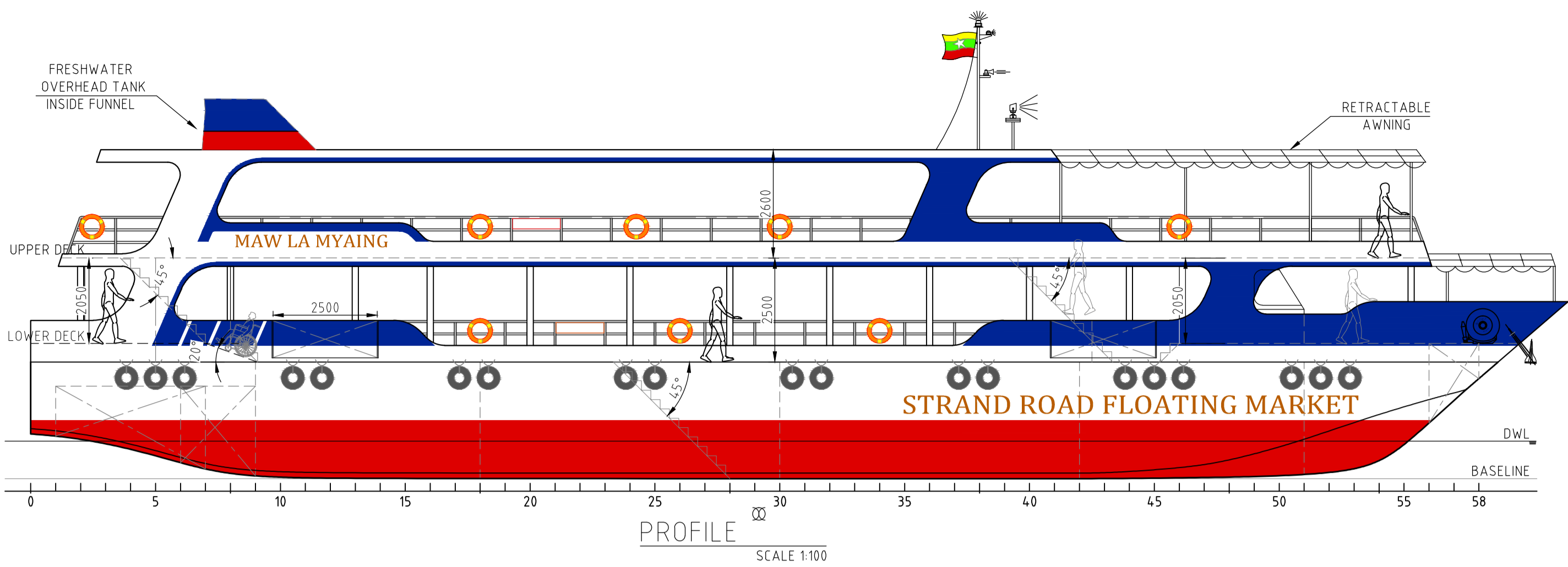
PRELIMINARY

TECHIES
MARINE SERVICE



NO.10, BO TAY ZA STREET (2), TAN TU MA ROAD, TUWANNA TOWNSHIP, YANGON, MYANMAR
PHONE : +95 95040848, +95 9459196096, +95 9773820727

TITLE GENERAL ARRANGEMENT					
PROJECT 39.5 M, SPLIT HOPPER BARGE			HULL No. H6171		
DRAWING REF. TM602-15-001_A			SHEET No. 1 OF 1		
DRAWN MHK			SCALE 1:150 OR AS SHOWN		
CHECKED NANDA		APPROVED NANDA		DATE 23/05/2017	
THIS DRAWING & ALL INFORMATION CONTAINED WITHIN IS RESERVED AS THE PROPERTY OF TECHIES COMPANY LIMITED. ANY PART OF THIS OBJECT MAY NOT BE COPIED, MODIFIED OR TRANSFERRED TO ANY OTHER PARTY WITHOUT ACKNOWLEDGEMENT OF TECHIES CO., LTD.				PAPER SIZE A3	
REV	DESCRIPTION	DATE	DRN	CHECKED	APPROVED
A	PRELIMINARY	23/05/2017	MHK	NANDA	NANDA
	REVISION DETAILS				



PRELIMINARY

TECHIES
MARINE SERVICE

NO.10, BO TAY ZA STREET (2), TAN TU MA ROAD, TUWANNA TOWNSHIP, YANGON, MYANMAR
PHONE : +95 95040848, +95 9459196096, +95 9773820727

TITLE: **GENERAL ARRANGEMENT PRELIMINARY**

PROJECT: 37.0M FLOATING MARKET

HULL No.: H2174

DRAWING REF.: TM206-15-001_C

SHEET No.: 1 OF 2

SCALE: 1:100

OR AS SHOWN

DRAWN: SAMUEL

CHECKED: NANDA

APPROVED: [Signature]

DATE: 29/8/2017

PAPER SIZE: A2

THIS DRAWING & ALL INFORMATION CONTAINED WITHIN IS RESERVED AS THE PROPERTY OF TECHIES COMPANY LIMITED. ANY PART OF THIS OBJECT MAY NOT BE COPIED, MODIFIED OR TRANSFERRED TO ANY OTHER PARTY WITHOUT ACKNOWLEDGEMENT OF TECHIES CO., LTD.

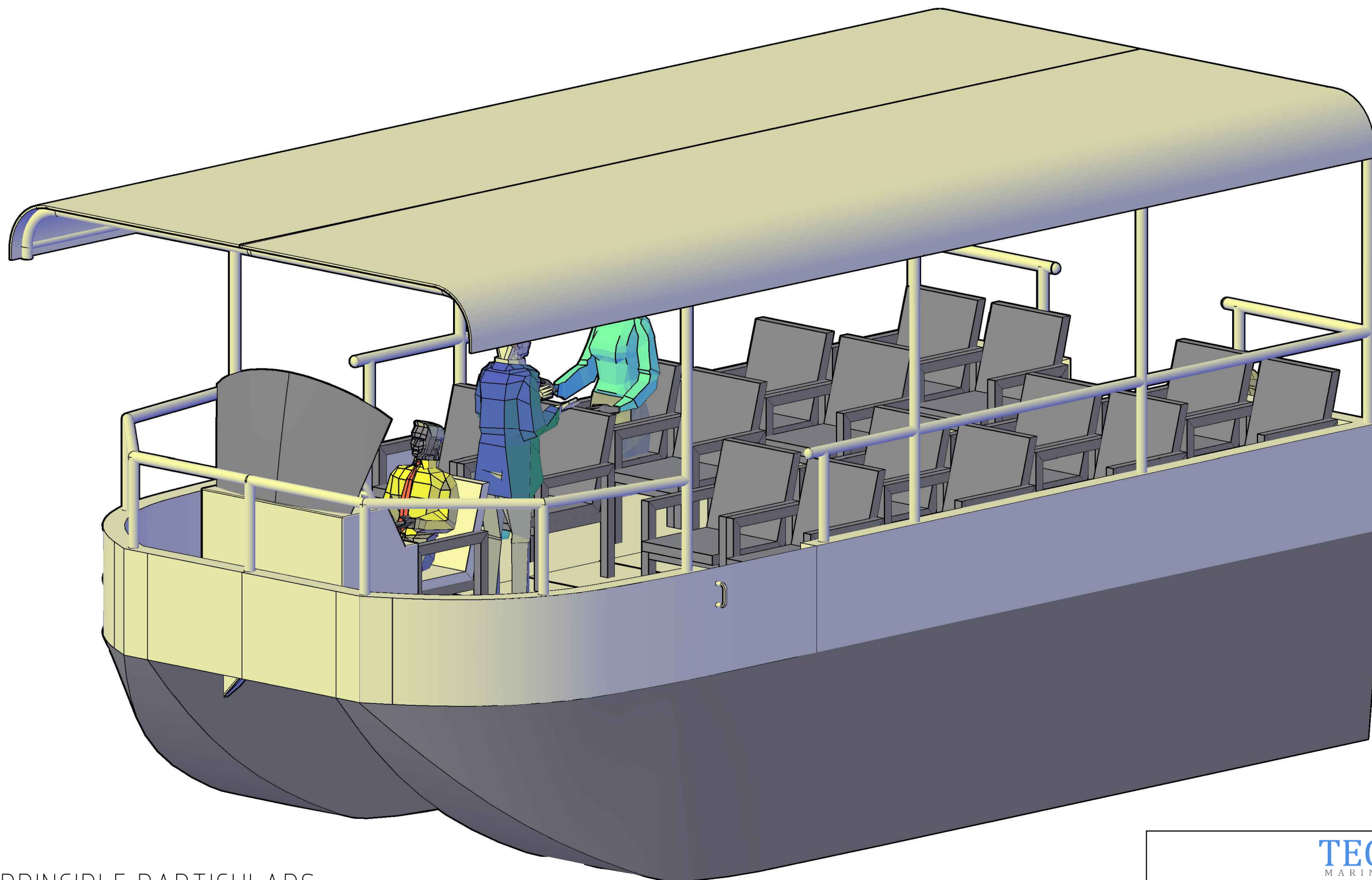
C	PRELIMINARY (GENSET MOVED IN), MAJOR ARRANGEMENT CHANGED	30/8/2017	SAMUEL	NANDA
B	PRELIMINARY (BACK UP GENSET CHANGED 50KVA)	21/8/2017	SAMUEL	NANDA
A	PRELIMINARY	31/7/2017	SAMUEL	NANDA
REV	REVISION DETAILS	DATE	DRN	CHECKED

NOTES:

- TOTAL STORAGE SPACE BELOW MAIN DECK TO BE 70 SQ.M.
- 225 MM RISE, 45° STEPS FOR MAIN STAIR, EMERGENCY STAIR & STORAGE SPACE STAIRS.
- ALL HATCH COVERS AND MANHOLES TO BE FLUSHED TYPES & WEATHERTIGHT, EXCEPT FOR THE ONES RANGED IN 15%LWL FROM AP AND FP.
- ALL UNITS ARE IN MILLIMETERS UNLESS STATED OTHERWISE.

PRINCIPLE PARTICULARS

CAPACITIES:		ITEMS:	
LENGTH OVERALL	- 37.00 M	(A) SOUVENIR BOOTHS	- 8 NOS.
LENGTH W/L	- 35.10 M	(B) CAFETERIA	- 2 NOS.
MOLDED BREADTH	- 8.00 M	(C) MANAGEMENT OFFICE	- 2 ROOMS
MOLDED DEPTH	- 2.80 M	(D) TRADING COUNTER	- 1 NO.
DESIGN DRAFT	- 1.30 M	(E) MULTIPURPOSE STAGE	- 1 NO.
FRAME SPACING	- 0.6 M	(F) FOOD BOOTH	- 8 NOS.
DISPLACEMENT	- 290 TONNES	(G) HIGH TABLE	- 8 NOS.
FRESH WATER	- 14000 LITERS	(H) ICE-CREAM STAND	- 2 NOS.
SEWAGE	- 14000 LITERS	(I) BEACH SEATS & TABLES	- 4 SETS
		(J) BBQ PITS	- 4 NOS.
		(K) MAXIMUM CAPACITY	- 320 PERSONS.





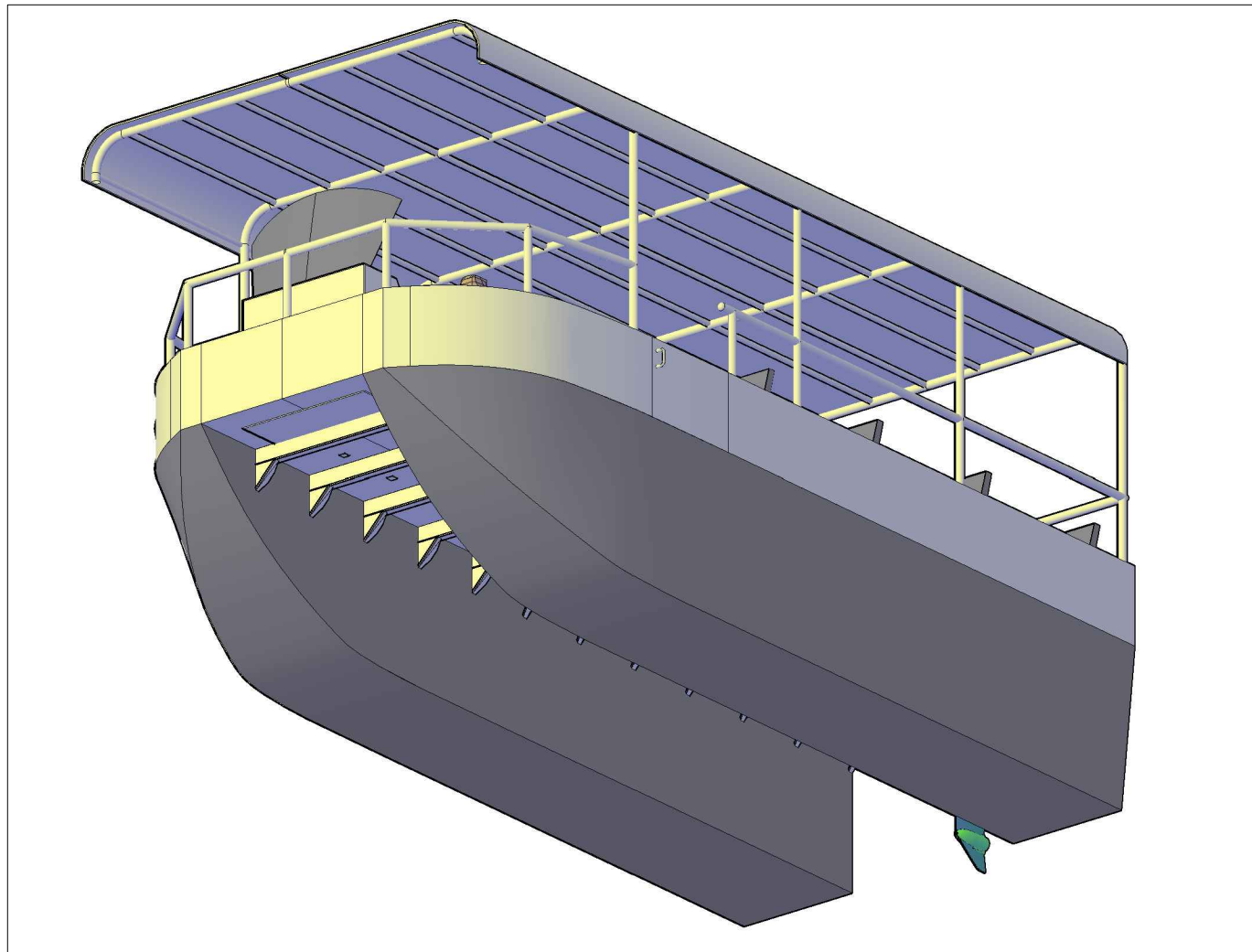
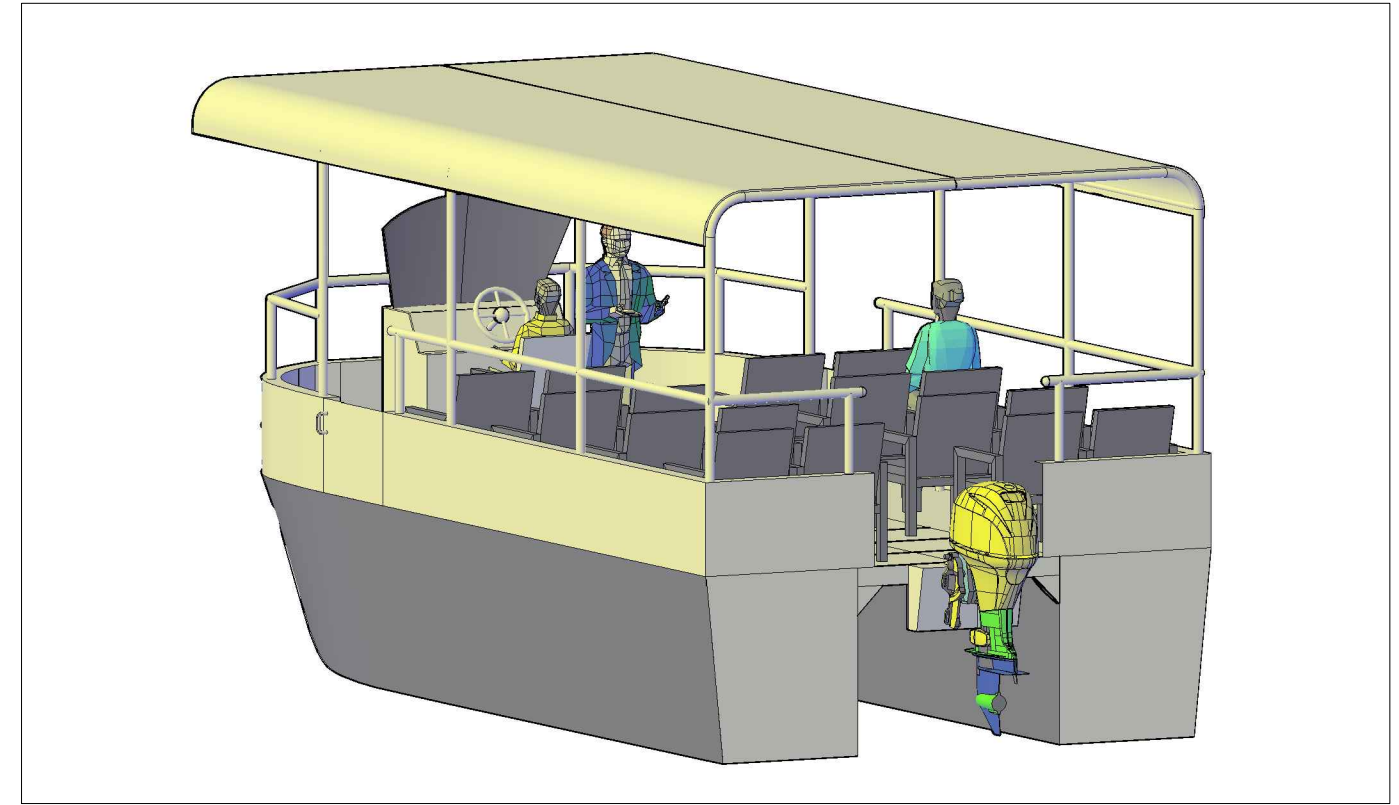
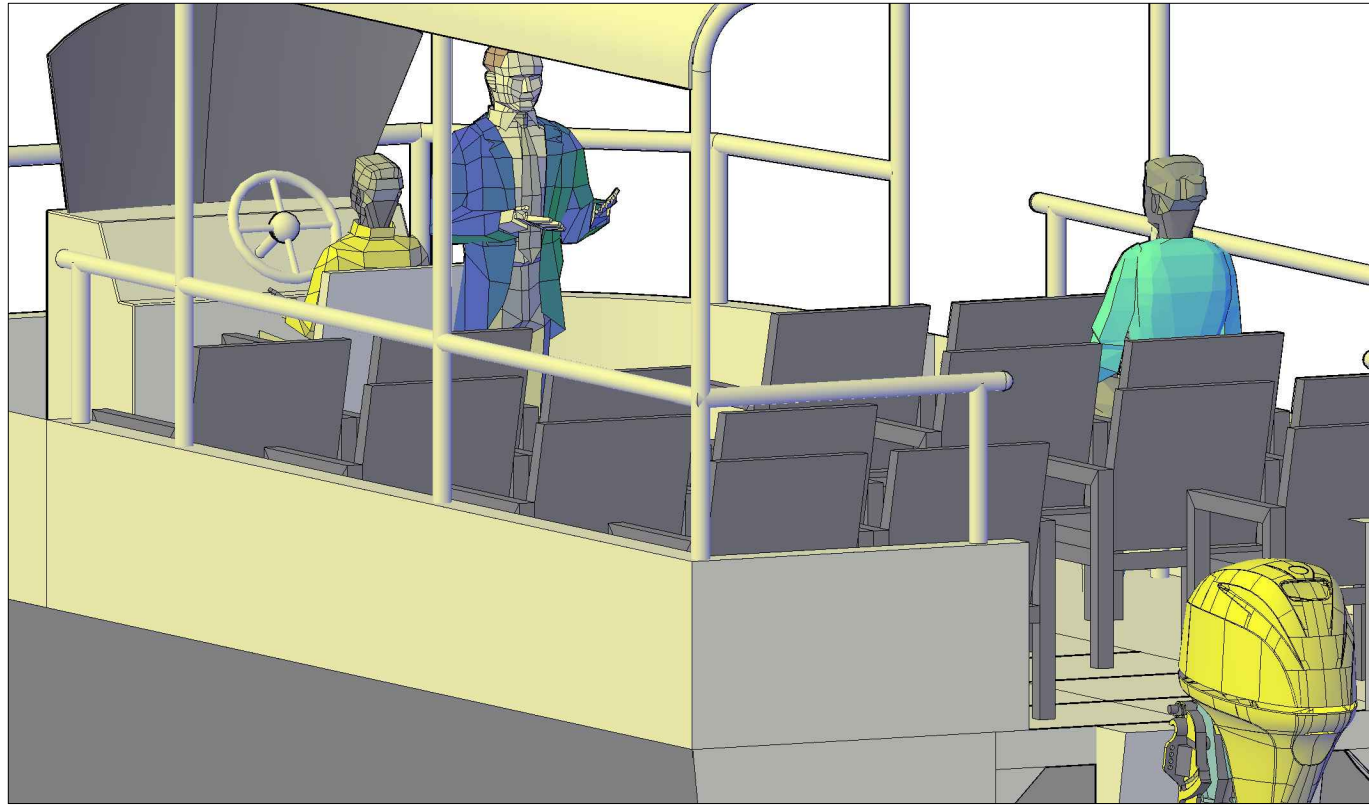
PRELIMINARY

PRINCIPLE PARTICULARS

LENGTH OVERALL - 6.00 M
 LENGTH W.L - 5.36 M
 MOLDED BREADTH - 3.00 M
 MOLDED DEPTH - 1.00 M
 DESIGN DRAFT - 0.40 M
 DISPLACEMENT - 3.60 TONNES
 SPEED - 8.0 KNOTS
 ENGINE - SUZUKI DF30A EFI
 (40 HP) OR EQUIVALENT

CAPACITIES:
 (A) CREW - 1 PAX
 (B) PASSENGERS - 16 PAX
 (C) FUEL OIL - 50 LITERS
 (D) FUEL CONSUMPTION - 13 L/Hr

			
NO.10, BO TAY ZA STREET (2), TAN TU MA ROAD, TUWANNA TOWNSHIP, YANGON, MYANMAR PHONE : +95 95040848, +95 9459196096, +95 9773820727			
TITLE MODEL FOR REFERENCE			
PROJECT 6.0M, CATAMARAN TOUR BOAT		HULL No. H1171	
DRAWING REF. TM001-05-02_A		SHEET No. 1 OF 2	
DRAWN SAMUEL		CHECKED NANDA	
APPROVED (Signature)		DATE 21/6/2017	
THIS DRAWING & ALL INFORMATION CONTAINED WITHIN IS RESERVED AS THE PROPERTY OF TECHIES COMPANY LIMITED. ANY PART OF THIS OBJECT MAY NOT BE COPIED, MODIFIED OR TRANSFERRED TO ANY OTHER PARTY WITHOUT ACKNOWLEDGEMENT OF TECHIES CO., LTD.			PAPER SIZE A3



PRINCIPLE PARTICULARS



LENGTH OVERALL - 6.00 M
 LENGTH W.L - 5.36 M
 MOLDED BREADTH - 3.00 M
 MOLDED DEPTH - 1.00 M
 DESIGN DRAFT - 0.40 M
 DISPLACEMENT - 3.60 TONNES

 SPEED - 8.0 KNOTS

 ENGINE - SUZUKI DF30A EFI
 (40 HP) OR EQUIVALENT

CAPACITIES:
 (A) CREW - 1 PAX
 (B) PASSENGERS - 16 PAX
 (C) FUEL OIL - 50 LITERS
 (D) FUEL CONSUMPTION - 13 L/Hr

PRELIMINARY

			
NO.10, BO TAY ZA STREET (2), TAN TU MA ROAD, TUWANNA TOWNSHIP, YANGON, MYANMAR PHONE : +95 95040848, +95 9459196096, +95 9773820727			
TITLE MODEL FOR REFERENCE			
PROJECT 6.0M, CATAMARAN TOUR BOAT		HULL No. H1171	
DRAWING REF. TM001-05-02_A		SHEET No. 2 OF 2	
DRAWN SAMUEL		CHECKED NANDA	
APPROVED [Signature]		DATE 21/6/2017	
THIS DRAWING & ALL INFORMATION CONTAINED WITHIN IS RESERVED AS THE PROPERTY OF TECHIES COMPANY LIMITED. ANY PART OF THIS OBJECT MAY NOT BE COPIED, MODIFIED OR TRANSFERRED TO ANY OTHER PARTY WITHOUT ACKNOWLEDGEMENT OF TECHIES CO., LTD.			PAPER SIZE A3